
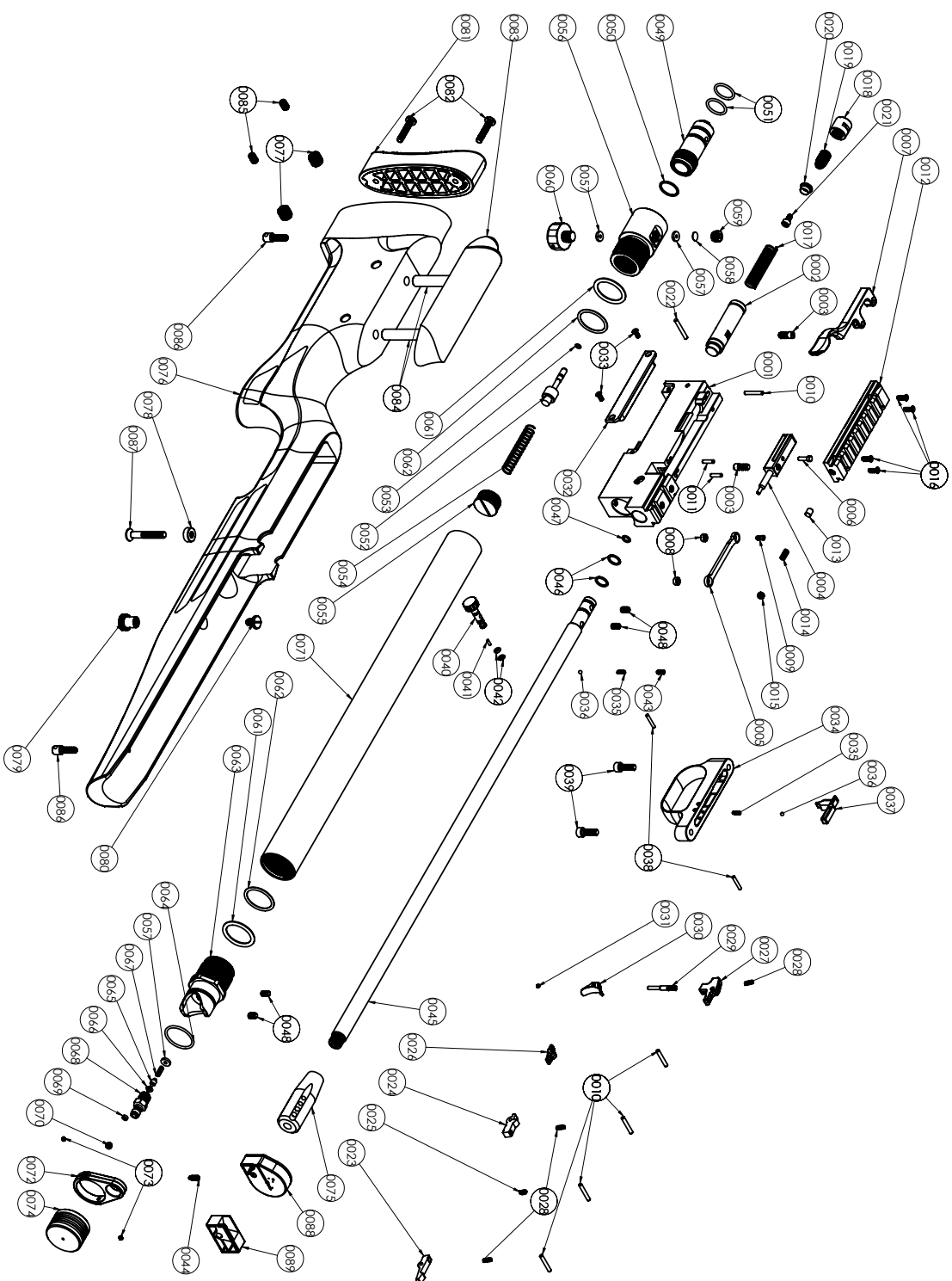

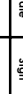




- Dikkat!
- 1- Teknoloji ve ürün tasarımı için teşekkür ederiz.
- 2- Tüm ölçüler mm cinsinden verilmektedir.
- 3- Tüm ölçüler mm cinsinden verilmektedir.
- 4- Aşağıdaki bilgileri dikkatle okuyunuz ve kullanınız.

Kontrol Control		İşim	Tarih	İmza	Molozlar Material	CROSLIM MALZEME	Ağırlık 3,75 ± 0,5 kg	Miktar	Ade	Miktar	Ade	Seri Serial	Miktar	Ade	Miktar	Ade	Miktar	Ade	Miktar	Ade	Miktar	Ade	Miktar	Ade	Miktar	Ade	Miktar	Ade	Miktar	Ade	Miktar	Ade	Miktar	Ade	Miktar	Ade	Miktar	Ade	Miktar	Ade	Miktar	Ade	Miktar	Ade	Miktar	Ade	Miktar	Ade	Miktar	Ade	Miktar	Ade	Miktar	Ade	Miktar	Ade	Miktar	Ade	Miktar	Ade	Miktar	Ade	Miktar	Ade	Miktar	Ade	Miktar	Ade	Miktar	Ade	Miktar	Ade	Miktar	Ade	Miktar	Ade	Miktar	Ade	Miktar	Ade	Miktar	Ade	Miktar	Ade	Miktar	Ade	Miktar	Ade	Miktar	Ade	Miktar	Ade	Miktar	Ade	Miktar	Ade	Miktar	Ade	Miktar	Ade	Miktar	Ade	Miktar	Ade	Miktar	Ade	Miktar	Ade	Miktar	Ade	Miktar	Ade	Miktar	Ade	Miktar	Ade	Miktar	Ade	Miktar	Ade	Miktar	Ade	Miktar	Ade	Miktar	Ade	Miktar	Ade	Miktar	Ade	Miktar	Ade	Miktar	Ade	Miktar	Ade	Miktar	Ade	Miktar	Ade	Miktar	Ade	Miktar	Ade	Miktar	Ade	Miktar	Ade	Miktar	Ade	Miktar	Ade	Miktar	Ade	Miktar	Ade	Miktar	Ade	Miktar	Ade	Miktar	Ade	Miktar	Ade	Miktar	Ade	Miktar	Ade	Miktar	Ade	Miktar	Ade	Miktar	Ade	Miktar	Ade	Miktar	Ade	Miktar	Ade	Miktar	Ade	Miktar	Ade	Miktar	Ade	Miktar	Ade	Miktar	Ade	Miktar	Ade	Miktar	Ade	Miktar	Ade	Miktar	Ade	Miktar	Ade	Miktar	Ade	Miktar	Ade	Miktar	Ade	Miktar	Ade	Miktar	Ade	Miktar	Ade	Miktar	Ade	Miktar	Ade	Miktar	Ade	Miktar	Ade	Miktar	Ade	Miktar	Ade	Miktar	Ade	Miktar	Ade	Miktar	Ade	Miktar	Ade	Miktar	Ade	Miktar	Ade	Miktar	Ade	Miktar	Ade	Miktar	Ade	Miktar	Ade	Miktar	Ade	Miktar	Ade	Miktar	Ade	Miktar	Ade	Miktar	Ade	Miktar	Ade	Miktar	Ade	Miktar	Ade	Miktar	Ade	Miktar	Ade	Miktar	Ade	Miktar	Ade	Miktar	Ade	Miktar	Ade	Miktar	Ade	Miktar	Ade	Miktar	Ade	Miktar	Ade	Miktar	Ade	Miktar	Ade	Miktar	Ade	Miktar	Ade	Miktar	Ade	Miktar	Ade	Miktar	Ade	Miktar	Ade	Miktar	Ade	Miktar	Ade	Miktar	Ade	Miktar	Ade	Miktar	Ade	Miktar	Ade	Miktar	Ade	Miktar	Ade	Miktar	Ade	Miktar	Ade	Miktar	Ade	Miktar	Ade	Miktar	Ade	Miktar	Ade	Miktar	Ade	Miktar	Ade	Miktar	Ade	Miktar	Ade	Miktar	Ade	Miktar	Ade	Miktar	Ade	Miktar	Ade	Miktar	Ade	Miktar	Ade	Miktar	Ade	Miktar	Ade	Miktar	Ade	Miktar	Ade	Miktar	Ade	Miktar	Ade	Miktar	Ade	Miktar	Ade	Miktar	Ade	Miktar	Ade	Miktar	Ade	Miktar	Ade	Miktar	Ade	Miktar	Ade	Miktar	Ade	Miktar	Ade	Miktar	Ade	Miktar	Ade	Miktar	Ade	Miktar	Ade	Miktar	Ade	Miktar	Ade	Miktar	Ade	Miktar	Ade	Miktar	Ade	Miktar	Ade	Miktar	Ade	Miktar	Ade	Miktar	Ade	Miktar	Ade	Miktar	Ade	Miktar	Ade	Miktar	Ade	Miktar	Ade	Miktar	Ade	Miktar	Ade	Miktar	Ade	Miktar	Ade	Miktar	Ade	Miktar	Ade	Miktar	Ade	Miktar	Ade	Miktar	Ade	Miktar	Ade	Miktar	Ade	Miktar	Ade	Miktar	Ade	Miktar	Ade	Miktar	Ade	Miktar	Ade	Miktar	Ade	Miktar	Ade	Miktar	Ade	Miktar	Ade	Miktar	Ade	Miktar	Ade	Miktar	Ade	Miktar	Ade	Miktar	Ade	Miktar	Ade	Miktar	Ade	Miktar	Ade	Miktar	Ade	Miktar	Ade	Miktar	Ade	Miktar	Ade	Miktar	Ade	Miktar	Ade	Miktar	Ade	Miktar	Ade	Miktar	Ade	Miktar	Ade	Miktar	Ade	Miktar	Ade	Miktar	Ade	Miktar	Ade	Miktar	Ade	Miktar	Ade	Miktar	Ade	Miktar	Ade	Miktar	Ade	Miktar	Ade	Miktar	Ade	Miktar	Ade	Miktar	Ade	Miktar	Ade	Miktar	Ade	Miktar	Ade	Miktar	Ade	Miktar	Ade	Miktar	Ade	Miktar	Ade	Miktar	Ade	Miktar	Ade	Miktar	Ade	Miktar	Ade	Miktar	Ade	Miktar	Ade	Miktar	Ade	Miktar	Ade	Miktar	Ade	Miktar	Ade	Miktar	Ade	Miktar	Ade	
--------------------	---	------	-------	------	----------------------	-----------------	--------------------------	--------	-----	--------	-----	----------------	--------	-----	--------	-----	--------	-----	--------	-----	--------	-----	--------	-----	--------	-----	--------	-----	--------	-----	--------	-----	--------	-----	--------	-----	--------	-----	--------	-----	--------	-----	--------	-----	--------	-----	--------	-----	--------	-----	--------	-----	--------	-----	--------	-----	--------	-----	--------	-----	--------	-----	--------	-----	--------	-----	--------	-----	--------	-----	--------	-----	--------	-----	--------	-----	--------	-----	--------	-----	--------	-----	--------	-----	--------	-----	--------	-----	--------	-----	--------	-----	--------	-----	--------	-----	--------	-----	--------	-----	--------	-----	--------	-----	--------	-----	--------	-----	--------	-----	--------	-----	--------	-----	--------	-----	--------	-----	--------	-----	--------	-----	--------	-----	--------	-----	--------	-----	--------	-----	--------	-----	--------	-----	--------	-----	--------	-----	--------	-----	--------	-----	--------	-----	--------	-----	--------	-----	--------	-----	--------	-----	--------	-----	--------	-----	--------	-----	--------	-----	--------	-----	--------	-----	--------	-----	--------	-----	--------	-----	--------	-----	--------	-----	--------	-----	--------	-----	--------	-----	--------	-----	--------	-----	--------	-----	--------	-----	--------	-----	--------	-----	--------	-----	--------	-----	--------	-----	--------	-----	--------	-----	--------	-----	--------	-----	--------	-----	--------	-----	--------	-----	--------	-----	--------	-----	--------	-----	--------	-----	--------	-----	--------	-----	--------	-----	--------	-----	--------	-----	--------	-----	--------	-----	--------	-----	--------	-----	--------	-----	--------	-----	--------	-----	--------	-----	--------	-----	--------	-----	--------	-----	--------	-----	--------	-----	--------	-----	--------	-----	--------	-----	--------	-----	--------	-----	--------	-----	--------	-----	--------	-----	--------	-----	--------	-----	--------	-----	--------	-----	--------	-----	--------	-----	--------	-----	--------	-----	--------	-----	--------	-----	--------	-----	--------	-----	--------	-----	--------	-----	--------	-----	--------	-----	--------	-----	--------	-----	--------	-----	--------	-----	--------	-----	--------	-----	--------	-----	--------	-----	--------	-----	--------	-----	--------	-----	--------	-----	--------	-----	--------	-----	--------	-----	--------	-----	--------	-----	--------	-----	--------	-----	--------	-----	--------	-----	--------	-----	--------	-----	--------	-----	--------	-----	--------	-----	--------	-----	--------	-----	--------	-----	--------	-----	--------	-----	--------	-----	--------	-----	--------	-----	--------	-----	--------	-----	--------	-----	--------	-----	--------	-----	--------	-----	--------	-----	--------	-----	--------	-----	--------	-----	--------	-----	--------	-----	--------	-----	--------	-----	--------	-----	--------	-----	--------	-----	--------	-----	--------	-----	--------	-----	--------	-----	--------	-----	--------	-----	--------	-----	--------	-----	--------	-----	--------	-----	--------	-----	--------	-----	--------	-----	--------	-----	--------	-----	--------	-----	--------	-----	--------	-----	--------	-----	--------	-----	--------	-----	--------	-----	--------	-----	--------	-----	--------	-----	--------	-----	--------	-----	--------	-----	--------	-----	--------	-----	--------	-----	--------	-----	--------	-----	--------	-----	--------	-----	--------	-----	--------	-----	--------	-----	--------	-----	--------	-----	--------	-----	--------	-----	--------	-----	--------	-----	--------	-----	--------	-----	--------	-----	--------	-----	--------	-----	--------	-----	--------	-----	--------	-----	--------	-----	--------	-----	--------	-----	--------	-----	--------	-----	--------	-----	--------	-----	--------	-----	--------	-----	--------	-----	--------	-----	--------	-----	--------	-----	--------	-----	--------	-----	--------	-----	--------	-----	--------	-----	--------	-----	--------	-----	--------	-----	--



No report Defectives or Accidents Details of Revision and Comments (1.2.3. 4.5. C)			
	Item Name	Tarifi Date	İmza Sign
Citizen Drawn by	Paint KSAV		
Onay Approval	AAR SİDİ		
İfaiem Mig	OZAN AYÇİN		
	MÜHÜR Control		
Malzeme Material ÇOKU MALZEME			
Ağalık Mass		Kayaçlı Depozito Sıvırtı Boygısı & Boygıya Malzeme 42750 Kayaçlı / Sıvırtı 184871 +90 332 511 00 55 +90 332 514 80 55 <a href="mailto:info@gemtex.com">info@gemtex.com</a>	
Adet Quantity		<b>PORTMAN</b> PORTMAN CAYDEN PATLATMA PORTMAN CAYDEN EXPLODE	
Sertifik Toughness	Resim Adı/Kodu Drawing Name/Code	CR-C-102	A3-L
ÖlÇEK/SCALE 1:4		SAYFA 3 / 98	

## Crosman Cayden BOM Tablosu

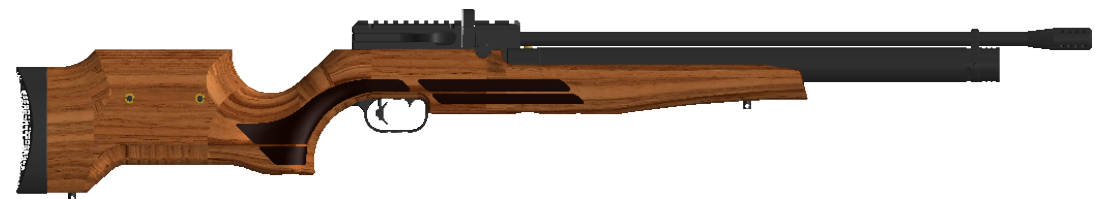
Balloon Number	Part Code	Parça Adı	Part Name	Matzeme Material	Ağırlık(g) Weight	Üretim Mfg.	Adet Quantity
----------------	-----------	-----------	-----------	------------------	-------------------	-------------	---------------

0001	CR-001	KASA	RECEIVER	6061 Alümin	357.42	Evet	1
0002	CR-002	ÇEKİCİ	HAMMER	1.0738 (115Mn37)	54.29	Evet	1
0003	CR-003	ÇEKİCİ SİRKİCİ ÇAYLA	HAMMER DRIVER SCREW	1.0718 (115Mn350)	2.22	Evet	2
0004	CR-004	İÇİNE	FILLET FUSHER	1.0718 (115Mn350)	33.34	Evet	1
0005	CR-005	İÇİNE LİYESİ	FILLET FUSHER LEVER	ASİ 4130 Çelik, 86C2-38 İnkerming	7.46	Hayır	1
0006	CR-006	İÇİNE FİMLİ	FILLET FUSHER PIN	1.0718 (115Mn350)	1.03	Evet	1
0007	CR-007	KILMA KOLU	COCKING LEVER	Dünya Karpuz Çelik	51.05	Hayır	1
0008	CR-008	10.5E 888-383-10.5E K.C.10.48 RULMAN		COCKU MALZEME	0.5	Hayır	2
0009	CR-009	KILMA KOLU LEVİ ÇAYLA SI	COCKING LEVER SCREW	1.0718 (115Mn350)	0.49	Evet	1
0010	CR-010	ISO 8724 - 3 x 22 - A - 9 PM		ASİ 4130 Çelik, 86C2-38 İnkerming	1.10	Hayır	5
0011	CR-011	ISO 8724 - 3 x 12 - A - 9 PM		ASİ 4130 Çelik, 86C2-38 İnkerming	0.46	Hayır	2
0012	CR-012	İSTİ KAPAK	RECEIVER TOP COVER	6061 Alümin	44.30	Evet	1
0013	CR-013	İSTİ KAPAK FİMLİ	RECEIVER TOP COVER PIN	1.0718 (115Mn350)	1.10	Evet	1
0014	CR-014	İSTİ KAPAK YAKI	RECEIVER TOP COVER SPRING	1.4310 (X10CrNi188)	0.23	Hayır	1
0015	CR-015	İSTİ KAPAK KAMA SİRKİCİ	RECEIVER TOP COVER M44 SİRKİCİ	ASİ 1035 Çelik (S3)	0.583	Hayır	1
0016	CR-016	İSTİ KAPAK KAMA 1048 ÇAYLA	RECEIVER TOP COVER CH M4310	ASİ 1035 Çelik (S3)	0.619	Hayır	4
0017	CR-017	ÇEKİCİ YAKI	HAMMER SPRING	1.4310 (X10CrNi188)	3.01	Hayır	1
0018	CR-018	KASA ARKA KAPAK	RECEIVER REAR COVER	1.0718 (115Mn350)	14.03	Evet	1
0019	CR-019	ÇEKİCİ AYAR ÇAYLA SI	HAMMER ADJUSTMENT SCREW	1.0718 (115Mn350)	7.37	Evet	1
0020	CR-020	ÇEKİCİ GÜÇ AYAR ÇAYLA SI	HAMMER ADJUSTMENT SCREW BUSH	1.0718 (115Mn350)	1.55	Evet	1
0021	CR-021	ÇEKİCİ GÜÇ AYAR ÇAYLA SI	HAMMER ADJUSTMENT SCREWS SHIMMA SCREW	ASİ 1035 Çelik (S3)	1.756	Hayır	1
0022	CR-022	ISO 8724 - 3 x 24 - A - 9 PM		ASİ 4130 Çelik, 86C2-38 İnkerming	1.33	Hayır	1
0023	CR-023	ÇEKİCİ TIRIQCUL İBRAK	HAMMER SEAR	ASİ 4130 Çelik, 86C2-38 İnkerming	6.20	Hayır	1
0024	CR-024	ÇEKİCİ TIRIQCUL AYAR İBRAK	ADJUSTABLE SEAR	ASİ 4130 Çelik, 86C2-38 İnkerming	4.27	Hayır	1
0025	CR-025	ÇEKİCİ TIRIQCUL AYAR İBRAK	ADJUSTABLE SEAR M435	ASİ 1035 Çelik (S3)	0.205	Hayır	1
0026	CR-026	TEK HANGİT İBRAKMA İBRAK	M435 SEAR	ASİ 4130 Çelik, 86C2-38 İnkerming	3.25	Hayır	1
0027	CR-027	TEK ÇOYOSI	TROGGER BODY	ASİ 4130 Çelik, 86C2-38 İnkerming	121.6	Hayır	1
0028	CR-028	İBRAK YAKI	SEAR SPRING	1.4310 (X10CrNi188)	0.12	Hayır	3
0029	CR-029	TEK MİL	TROGGER PIN	1.0718 (115Mn350)	2.28	Evet	1
0030	CR-030	TEK	TROGGER	6061 Alümin	1.83	Hayır	1
0031	CR-031	TEK M435 SİRKİCİ	TROGGER M435 SİRKİCİ	ASİ 1035 Çelik (S3)	0.049	Hayır	1
0032	CR-032	KASA YAN KAPAK	RECEIVER SIDE COVER	ETAL 60 AL	24.44	Hayır	1
0033	CR-033	KASA YAN KAPAK Hİ M435 ÇAYLA	RECEIVER SIDE COVER CH M435 SCREW	ASİ 1035 Çelik (S3)	0.204	Hayır	2
0034	CR-034	TEK KOKULUDU	TROGGER BAILING	ETAL 60 AL	57.40	Hayır	1
0035	CR-035	BAKİT YAKI	SAFETY SPRING	1.4310 (X10CrNi188)	0.06	Hayır	2
0036	CR-036	BAKİT BAYASI	SAFETY BALL	ASİ 4130 Çelik, 86C2-38 İnkerming	0.11	Hayır	2
0037	CR-037	BAKİT	SAFETY	ASİ 1035 Çelik, 86C2-38 İnkerming	9.46	Hayır	1
0038	CR-038	ISO 8724 - 2.5 x 16 - A - 51 PM		ASİ 4130 Çelik, 86C2-38 İnkerming	0.41	Hayır	2
0039	CR-039	TEK KOKULUDU M435	RIGIDER BAILING SH M435 SCREW	ASİ 1035 Çelik (S3)	4.083	Hayır	2
0040	CR-040	GÜÇ AYAR YAKI	POWER ADJUSTMENT VALVE	1.0718 (115Mn350)	10.82	Evet	1
0041	CR-041	ISO 8724 - 2.6 x 4 - 51 PM		ASİ 4130 Çelik, 86C2-38 İnkerming	0.15	Hayır	1
0042	CR-042	GÜÇ AYAR VALE ÇORNG	POWER ADJUSTMENT VALVE C- RING	PTE (gnnrl)	0.06	Hayır	2
0043	CR-043	GÜÇ AYAR VALE M435 SİRKİCİ	POWER ADJUSTMENT VALVE M435 SİRKİCİ	ASİ 1035 Çelik (S3)	0.344	Hayır	1
0044	CR-044	MAGAZİN M435 İBRAK YAKI SİRKİCİ	MAGAZINE M435 İBRAK BEARING	ASİ 1035 Çelik (S3)	0.30	Hayır	1
0045	CR-045	İBRAK	BARREL	1.0718 (115Mn350)	527.78	Evet	1
0046	CR-046	İBRAK ÇAYLA ÇORNG	BARREL OUTER DIAKEER ÇORNG	PTE (gnnrl)	0.14	Hayır	2
0047	CR-047	İBRAK ÇAYLA ÇORNG	BARREL INNER DIAKEER ÇORNG	PTE (gnnrl)	0.09	Hayır	1
0048	CR-048	İBRAK M435 SİRKİCİ	BARREL M435 SİRKİCİ	ASİ 1035 Çelik (S3)	0.915	Hayır	4
0049	CR-049	ŞİP YAKI	VALVE HOUSING	1.0718 (115Mn350)	89.20	Evet	1

## Crosman Cayden BOM Tablosu

Balloon Number	Part Code	Parça Adı	Part Name	Matzeme Material	Ağırlık(g) Weight	Üretim Mfg.	Adet Quantity
----------------	-----------	-----------	-----------	------------------	-------------------	-------------	---------------

0050	CR-050	ŞİP YAKI ÇAYLA ÇORNG	VALVE HOUSING FRONTAL Ç- RING	PTE (gnnrl)	0.23	Hayır	1
0051	CR-051	ŞİP YAKI ÇAYLA ÇAYLA ÇORNG	VALVE HOUSING OD ÇORNG	PTE (gnnrl)	0.42	Hayır	2
0052	CR-052	ŞİP	VALVE	1.0718 (115Mn350)	8.20	Evet	1
0053	CR-053	ŞİP ÇAYLA ÇORNG	VALVE ÇORNG	PTE (gnnrl)	0.03	Hayır	1
0054	CR-054	ŞİP YAKI KAPAK	VALVE SPRING	1.4310 (X10CrNi188)	2.86	Hayır	1
0055	CR-055	ŞİP YAKI KAPAK	VALVE RETAINING CAP	6061 Alümin	4.85	Evet	1
0056	CR-056	İBRAK YAKI	DEAG VALVE	6061 Alümin	77.19	Evet	1
0057	CR-057	CONIA	SEAL	PTE (gnnrl)	0.26	Evet	3
0058	CR-058	ŞİP İBRAK FİMLİ	SAFETY VALVE WASHER	Pinc	0.17	Evet	1
0059	CR-059	İBRAK İBRAK	SAFETY VALVE	Pinc	2.96	Evet	1
0060	CR-060	MANONİRE	MANONİRE	COCKU MALZEME	0.17	Hayır	1
0061	CR-061	İBRAK YAKI ÇAYLA ÇORNG	DEAG VALVE REAR ÇORNG	PTE (gnnrl)	0.08	Hayır	2
0062	CR-062	İBRAK YAKI ÇAYLA ÇORNG	DEAG VALVE FRONT ÇORNG	PTE (gnnrl)	0.78	Hayır	2
0063	CR-063	İBRAK YAKI	FLUNG VALVE	6061 Alümin	53.94	Evet	1
0064	CR-064	İBRAK YAKI ÇAYLA ÇORNG	FLUNG PROBE COVER CAP O- RING	PTE (gnnrl)	0.43	Hayır	1
0065	CR-065	İBRAK YAKI ÇAYLA ÇORNG	FLUNG PROBE VALVE	1.0718 (115Mn350)	2.06	Evet	1
0066	CR-066	İBRAK YAKI ÇAYLA ÇORNG	FLUNG PROBE VALVE ÇORNG	PTE (gnnrl)	0.09	Hayır	1
0067	CR-067	İBRAK YAKI ÇAYLA ÇORNG	FLUNG PROBE VALVE SPRING	1.4057 (X10CrNi188)	0.08	Hayır	1
0068	CR-068	İBRAK YAKI ÇAYLA ÇORNG	FLUNG PROBE	1.0706 (115Mn37)	8.85	Evet	1
0069	CR-069	İBRAK YAKI ÇAYLA ÇORNG	ARTANK DEAG SEAL	PA Tp 6	0.04	Hayır	1
0070	CR-070	İBRAK YAKI ÇAYLA ÇORNG	ARTANK DEAG M435 SİRKİCİ	ASİ 1035 Çelik (S3)	0.501	Hayır	1
0071	CR-071	İBRAK YAKI ÇAYLA ÇORNG	ARTANK	1.0577 (S355J2CP4)	824.72	Evet	1
0072	CR-072	İBRAK YAKI ÇAYLA ÇORNG	TÜBESİRETEL ÇENTİRCİ BUSH	ETAL 60 AL	12.32	Hayır	1
0073	CR-073	İBRAK YAKI ÇAYLA ÇORNG	TÜBESİRETEL ÇENTİRCİ BUSH M435 SİRKİCİ	ASİ 1035 Çelik (S3)	0.117	Hayır	2
0074	CR-074	İBRAK YAKI ÇAYLA ÇORNG	FLUNG VALVE COVER	6061 Alümin	19.14	Evet	1
0075	CR-075	İBRAK YAKI ÇAYLA ÇORNG	M435	6061 Alümin	37.45	Evet	1
0076	CR-076	İBRAK YAKI ÇAYLA ÇORNG	KURDAK	Tüben Wapud	989.96	Evet	1
0077	CR-077	İBRAK YAKI ÇAYLA ÇORNG	CHEEK REST ADJUSTMENT BUSH	Pinc	4.33	Evet	2
0078	CR-078	İBRAK YAKI ÇAYLA ÇORNG	STOCK SCREW WASHER	Pinc	2.56	Evet	1
0079	CR-079	İBRAK YAKI ÇAYLA ÇORNG	PCCANNY NUT	Pinc	9.82	Evet	1
0080	CR-080	İBRAK YAKI ÇAYLA ÇORNG	PCCANNY NUTS SCREW	Pinc	4.07	Evet	1
0081	CR-081	İBRAK YAKI ÇAYLA ÇORNG	BUSH PAD	Beselle	133.06	Hayır	2
0082	CR-082	İBRAK YAKI ÇAYLA ÇORNG	PINCROSS M435 STOCK BUSH	ASİ 1035 Çelik (S3)	4.800	Hayır	2
0083	CR-083	İBRAK YAKI ÇAYLA ÇORNG	CHEEK REST	Tüben Wapud	66.94	Evet	1
0084	CR-084	İBRAK YAKI ÇAYLA ÇORNG	CHEEK REST PIN	1.0718 (115Mn350)	42.55	Evet	2
0085	CR-085	İBRAK YAKI ÇAYLA ÇORNG	CHEEK REST ADJUSTMENT	ASİ 1035 Çelik (S3)	1.554	Hayır	2
0086	CR-086	İBRAK YAKI ÇAYLA ÇORNG	SWIVEL	1.0706 (115Mn37)	4.45	Evet	2
0087	CR-087	İBRAK YAKI ÇAYLA ÇORNG	STOCK SCREW	ASİ 1035 Çelik (S3)	9.146	Evet	1
0088	CR-088	İBRAK YAKI ÇAYLA ÇORNG	MAGAZİN	COCKU PLASTİK	11.44	Evet	2
0089	CR-089	İBRAK YAKI ÇAYLA ÇORNG	SINGLE SHOT TRAY	PA Tp 6	4.83	Evet	1
0090	CR-090	İBRAK YAKI ÇAYLA ÇORNG	PCCANNY	PA Type 6		Hayır	1
0091	CR-091	İBRAK YAKI ÇAYLA ÇORNG	ALLEN SET	ASİ 1035 Çelik		Hayır	1
0092	CR-092	İBRAK YAKI ÇAYLA ÇORNG	STAKE ÇORNG SET	PTE		Hayır	1
0093	CR-093	İBRAK YAKI ÇAYLA ÇORNG	CARTON BOX	CARTON		Hayır	1



- Dikkat!
1. Teknik resim çizim üzerinde ölçü alınmaz.
  2. Keskin kenarlar pahalı ve kırılabilir.
  3. Teknik resim üzerinde, yalnızca teknik sorunu gidermek için değiştirilebilir.
  4. Aksi belirtilmedikçe silahın teknik resiminde genel toleranslar için DIN 7148 standardı geçerlidir.

Başlıca Ölçüler ve Ağırlıklar Başlıca Ölçüler ve Ağırlıklar (12.3 x 10.3)	Çekim Down by	Onay Approval	Üretim Mfg.	Kontrol Control	İmza Name	Tarih Date	İmza Sign	Matzeme Material	Ağırlık Mass	Adet Quantity	Sertifika Certification	Resim Adı/Kodu Drawing Name/Code	CR-C-103	A3-L





## Crosman Kratos BOM Tablosu



[illegible]

## Crosman Kratos BOM Tablosu

Balloon Number	Part Code	Parça Adı	Part Name	Malzeme Material	Ağırlık(g) Weight	Üretim Mfg.	Adet Quantity
-------------------	-----------	-----------	-----------	---------------------	----------------------	----------------	------------------

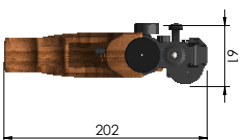


- Dikkat!**
- 1-Teknik resim üzerinden ölçü almayınız.
  - 2-Keskin kenarları pahlayın ve kını.
  - 3-Teknik resimler üzerinde, yalnızca teknik sorumlu kişiler değişiklik yapabilir.
  - 4- Aksı belirtilmediği sürece teknik resimlerin genel toleransları için DIN 7168 standartları geçerlidir.

Beprogramirano na Kalkulator Divizion de Revolucion and Comenents (1.2.3 - A.1. C)									
		Item Name	Total Dole	Intra Sign	<div><p>Beprogramirano na Kalkulator Divizion de Revolucion and Comenents (1.2.3 - A.1. C)</p></div>				
Client Down by	NAME FNAME								
Oncey Approval	APP APPRO								
Item Mfg.	ITEM ANON								
Kontrol Control	MIKAT CARGAT								
Material Material		Moterize Moterize							
Aplik Mass		Aplik Mass							
Adet Quantity		Adet Quantity							
Serifik Toughness		Serifik Toughness							
Refsim Adit/Kodu Drawing Name/Code									
OLCEK/SCALE 1:5					SAFA 7 / 98				
CR-K-106					A3-1				
PORCA ADI PART NAME					CROSIAN KRATOS BOM TABLOSI				

[illegible]





Başlıca Özellikler ve Açıklamalar Main Features and Comments (1.2.3.4.5.6.7.8.9.10.11.12)				Başlıca Özellikler ve Açıklamalar Main Features and Comments (1.2.3.4.5.6.7.8.9.10.11.12)			
Kontrol Control		Mühür Stamp		Kontrol Control		Mühür Stamp	
Çizen Drawn By		Ayar Adjust		Çizen Drawn By		Ayar Adjust	
Onay Approval		Ayar Adjust		Onay Approval		Ayar Adjust	
Uretim Mfg.		Ayar Adjust		Uretim Mfg.		Ayar Adjust	
Sertifika Certification		Ayar Adjust		Sertifika Certification		Ayar Adjust	
Toughness		Ayar Adjust		Toughness		Ayar Adjust	
Ağırlık Mass 3.75 ± 0.05 kg				Ağırlık Mass 3.75 ± 0.05 kg			
Parça Adı Part Name CROSMAN AKELA MONTAJ CROSMAN AKELA ASSEMBLY				Parça Adı Part Name CROSMAN AKELA MONTAJ CROSMAN AKELA ASSEMBLY			
Resim Adı/Kodu Drawing Name/Code CR-A-107				Resim Adı/Kodu Drawing Name/Code CR-A-107			
ÖLÇEK/SCALE 1:2				ÖLÇEK/SCALE 1:2			
SAYFA 8 / 78				SAYFA 8 / 78			





8

7

6

5

4

3

2

1

Crosman Akela BOM Tablosu

Balloon Number	Part Code	Parça Adı	Part Name	Malzeme Materyal	Ağırlık(g) Weight Mfg.	Uyelim Qty.	Adet Quantity
-------------------	--------------	-----------	-----------	---------------------	------------------------------	----------------	------------------

Crosman Akela BOM Tablosu

Balloon Number	Part Code	Parça Adı	Part Name	Malzeme Materyal	Ağırlık(g) Weight Mfg.	Uyelim Qty.	Adet Quantity
-------------------	--------------	-----------	-----------	---------------------	------------------------------	----------------	------------------

0001	CR-001	KASA	RECEIVER	6041 Aşgım	357,42	1	
0002	CR-002	CRİC	HAMMER	1.0736 (115MPF30)	56,29	1	
0003	CR-003	CRİC-SHİDÜ ÇAVAS	HAMMERDRIVER SCREW	1.0718 (115MPF30)	2,22	2	
0004	CR-004	İONE	PELLET FİŞİER	1.0718 (115MPF30)	35,34	1	
0005	CR-005	İONE LEVER	PELLET FİŞİER LEVER	ASİ 4130 ÇİK	7,46	1	
0006	CR-006	İONE FİNAL	PELLET FİŞİER FİNAL	865C-CH İONİTÖRİY	1.0718 (115MPF30)	1,03	1
0007	CR-007	KUBİKA KOU	COCİNG LEVER	Dİmero KİRON ÇİGİ	51,05	1	
0008	CR-008	İSO 15 R88 - 383 -	COCİNG LEVER SCREW	COCKU MALİZME	0,5	2	
0009	CR-009	KUBİKA KOU ÇAVAS	COCİNG LEVER SCREW	ASİ 4130 ÇİK	0,49	1	
0010	CR-010	İSO 924 - 3,30 - A - S	COCİNG LEVER SCREW	ASİ 4130 ÇİK	1,10	4	
0011	CR-011	İSO 924 - 3,12 - A - S	RECEIVER TOP COVER	ASİ 4130 ÇİK	0,66	2	
0012	CR-012	İST KAPAK	RECEIVER TOP COVER	6041 Aşgım	66,30	1	
0013	CR-013	İST KAPAK FİNAL	RECEIVER TOP COVER FİNAL	1.0718 (115MPF30)	1,10	1	
0014	CR-014	İST KAPAK YANİ	RECEIVER TOP COVER FİNAL	1.4310 (115MPF30)	0,23	1	
0015	CR-015	İST KAPAK M44	RECEIVER TOP COVER M44	ASİ 1005 ÇİK İSİ	0,83	1	
0016	CR-016	İST KAPAK M44	RECEIVER TOP COVER M44	ASİ 1005 ÇİK İSİ	0,83	1	
0017	CR-017	CRİC YANİ	HAMMER SPRİNG	1.4310 (115MPF30)	3,01	1	
0018	CR-018	KASA AKKA KAPAK	RECEIVER REAR COVER	1.0718 (115MPF30)	1,403	1	
0019	CR-019	CRİC AYAR ÇAVAS	HAMMER ADJUSTMENT SCREW	1.0718 (115MPF30)	7,37	1	
0020	CR-020	CRİC AYAR ÇAVAS	HAMMER ADJUSTMENT SCREW	1.0718 (115MPF30)	1,55	1	
0021	CR-021	CRİC AYAR ÇAVAS	HAMMER ADJUSTMENT SCREWS	ASİ 1005 ÇİK İSİ	1,754	1	
0022	CR-022	İSO 924 - 3,24 - A - S	RECEIVER REAR COVER	ASİ 4130 ÇİK	1,33	1	
0023	CR-023	CRİC TİDÜCİ İRİNAK	HAMMER SEAR	ASİ 4130 ÇİK	6,20	1	
0024	CR-024	CRİC TİDÜCİ AYAR	ADJUSTABLE SEAR	ASİ 4130 ÇİK	6,27	1	
0025	CR-025	CRİC TİDÜCİ AYAR	ADJUSTABLE SEAR	865C-CH İONİTÖRİY	0,305	1	
0026	CR-026	TRİNAK YANİ	TRIGGER SPRİNG	1.4310 (115MPF30)	0,12	2	
0027	CR-027	TRİNAK YANİ	TRIGGER FİNAL	1.0718 (115MPF30)	2,28	1	
0028	CR-028	TRİNAK YANİ	TRIGGER FİNAL	6041 Aşgım	1,83	1	
0029	CR-029	TRİNAK YANİ	TRIGGER FİNAL	ASİ 1005 ÇİK İSİ	0,069	1	
0030	CR-030	TRİNAK YANİ	TRIGGER FİNAL	ETAL 160 A	24,54	1	
0031	CR-031	TRİNAK YANİ	TRIGGER FİNAL	ETAL 160 A	24,54	1	
0032	CR-032	KASA YANİ AKKA	RECEIVER REAR COVER	ASİ 1005 ÇİK İSİ	0,254	2	
0033	CR-033	KASA YANİ AKKA	RECEIVER REAR COVER	ASİ 1005 ÇİK İSİ	0,254	2	
0034	CR-034	TRİNAK YANİ	TRIGGER SPRİNG	1.4310 (115MPF30)	0,06	1	
0035	CR-035	TRİNAK YANİ	TRIGGER SPRİNG	ASİ 4130 ÇİK	0,11	2	
0036	CR-036	TRİNAK YANİ	TRIGGER SPRİNG	865C-CH İONİTÖRİY	0,09	1	
0037	CR-037	TRİNAK YANİ	TRIGGER SPRİNG	ASİ 1005 ÇİK İSİ	0,11	2	
0038	CR-038	TRİNAK YANİ	TRIGGER SPRİNG	ASİ 1005 ÇİK İSİ	0,11	2	
0039	CR-039	TRİNAK YANİ	TRIGGER SPRİNG	ASİ 1005 ÇİK İSİ	0,11	2	
0040	CR-040	TRİNAK YANİ	TRIGGER SPRİNG	ASİ 1005 ÇİK İSİ	0,11	2	
0041	CR-041	TRİNAK YANİ	TRIGGER SPRİNG	ASİ 1005 ÇİK İSİ	0,11	2	
0042	CR-042	TRİNAK YANİ	TRIGGER SPRİNG	ASİ 1005 ÇİK İSİ	0,11	2	
0043	CR-043	TRİNAK YANİ	TRIGGER SPRİNG	ASİ 1005 ÇİK İSİ	0,11	2	
0044	CR-044	TRİNAK YANİ	TRIGGER SPRİNG	ASİ 1005 ÇİK İSİ	0,11	2	
0045	CR-045	TRİNAK YANİ	TRIGGER SPRİNG	ASİ 1005 ÇİK İSİ	0,11	2	
0046	CR-046	TRİNAK YANİ	TRIGGER SPRİNG	ASİ 1005 ÇİK İSİ	0,11	2	
0047	CR-047	TRİNAK YANİ	TRIGGER SPRİNG	ASİ 1005 ÇİK İSİ	0,11	2	
0048	CR-048	TRİNAK YANİ	TRIGGER SPRİNG	ASİ 1005 ÇİK İSİ	0,11	2	
0049	CR-049	TRİNAK YANİ	TRIGGER SPRİNG	ASİ 1005 ÇİK İSİ	0,11	2	
0050	CR-050	TRİNAK YANİ	TRIGGER SPRİNG	ASİ 1005 ÇİK İSİ	0,11	2	
0051	CR-051	TRİNAK YANİ	TRIGGER SPRİNG	ASİ 1005 ÇİK İSİ	0,11	2	
0052	CR-052	TRİNAK YANİ	TRIGGER SPRİNG	ASİ 1005 ÇİK İSİ	0,11	2	
0053	CR-053	TRİNAK YANİ	TRIGGER SPRİNG	ASİ 1005 ÇİK İSİ	0,11	2	
0054	CR-054	TRİNAK YANİ	TRIGGER SPRİNG	ASİ 1005 ÇİK İSİ	0,11	2	
0055	CR-055	TRİNAK YANİ	TRIGGER SPRİNG	ASİ 1005 ÇİK İSİ	0,11	2	
0056	CR-056	TRİNAK YANİ	TRIGGER SPRİNG	ASİ 1005 ÇİK İSİ	0,11	2	
0057	CR-057	TRİNAK YANİ	TRIGGER SPRİNG	ASİ 1005 ÇİK İSİ	0,11	2	
0058	CR-058	TRİNAK YANİ	TRIGGER SPRİNG	ASİ 1005 ÇİK İSİ	0,11	2	
0059	CR-059	TRİNAK YANİ	TRIGGER SPRİNG	ASİ 1005 ÇİK İSİ	0,11	2	
0060	CR-060	TRİNAK YANİ	TRIGGER SPRİNG	ASİ 1005 ÇİK İSİ	0,11	2	
0061	CR-061	TRİNAK YANİ	TRIGGER SPRİNG	ASİ 1005 ÇİK İSİ	0,11	2	
0062	CR-062	TRİNAK YANİ	TRIGGER SPRİNG	ASİ 1005 ÇİK İSİ	0,11	2	
0063	CR-063	TRİNAK YANİ	TRIGGER SPRİNG	ASİ 1005 ÇİK İSİ	0,11	2	
0064	CR-064	TRİNAK YANİ	TRIGGER SPRİNG	ASİ 1005 ÇİK İSİ	0,11	2	