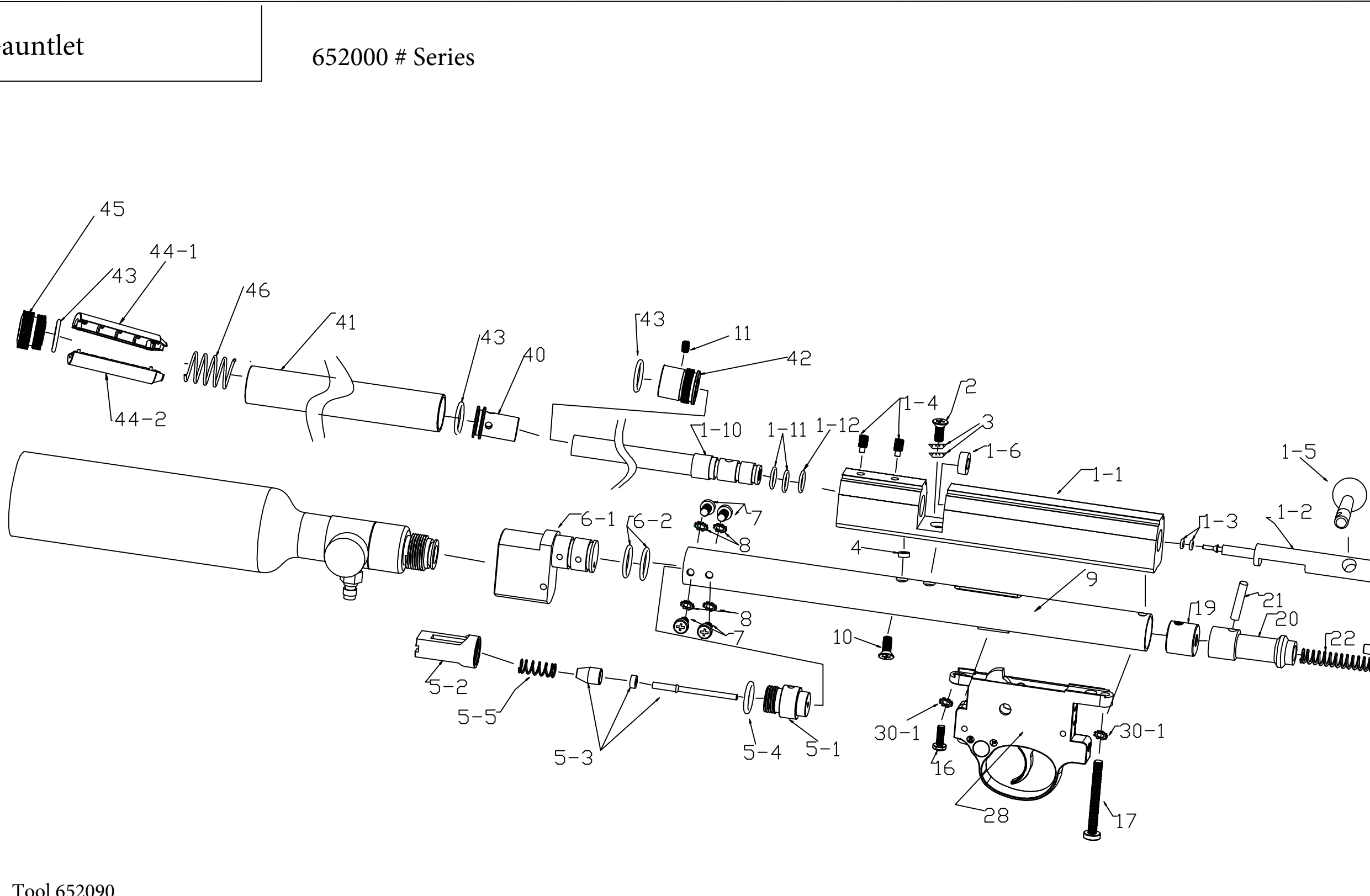


Gauntlet

652000 # Series



1-1	BREECH 炮芯
1-2	.177 BOLT .177 上膛弹杆
1-3	BOLT PROBE O RINGS 上膛弹杆密封圈 (2pcs)
1-4	BOLT HANDLE SCREW 上膛弹杆螺丝 (2pcs)
1-5	BOLT HANDLE 上膛弹杆柄
1-6	FRONT BREECH PLUG 上膛弹杆限位
1-7	FRONT BARREL SCREW 炮管前螺丝
1-9	REAR BREECH PLUG 机头后尾盖
1-10	.177 BARREL 炮管
1-11	BARREL O RINGS 炮管密封圈 (2pcs)
1-12	BARREL O RINGS 炮管密封圈
2	BREECH FIXING SCREW M5X12 机头外固定螺丝
4	BREECH SEAL 出气阀门密封
3	Breech Fixing Screw Washer 机头固定螺丝垫片 (2pcs)
5-1	REAR VALVE BODY 出气阀后身
5-2	FRONT VALVE BODY 出气阀前身
5-3	VALVE STEM ASSEMBLY 气门芯组件
5-4	VALVE O RING 出气阀密封圈
5-5	VALVE SPRING 出气阀门弹簧
8-1	TANK BLOCK 高压气瓶连接头
8-2	TANK BLOCK O RINGS 气瓶瓶连接头密封圈
7	TANK BLOCK FIXING SCREW M4X10 气瓶瓶连接头螺丝 (4pcs)
8.	TANK BLOCK FIXING WASHER M4垫片 (4pcs)
9	AIR TUBE 炮管气筒
10	VALVE SET SCREW M5X4 出气阀固定螺丝
11	M4X5SCREW M4X5 螺丝
16	FRONT TRIGGER SCREW M5X8 扳机轴固定螺丝
17	REAR TRIGGER SCREW 机头气筒连接螺丝
19	LOCATING PLUG 炮头气筒连接嘴
20	HAMMER 击锤
21	HAMMER PIN 击锤连接杆
22	HAMMER SPRING 击锤弹簧
24	COCKING PIECE 击锤弹簧尾盖
25	COCKING BLOCK 气阀限位
26	REAR AIR TUBE PLUG 气筒尾盖
28	TRIGGER ASSEMBLY 扳机组件
40	BARREL SHROUD MUZZLE 炮头
41	BARREL SHROUD 炮管套筒
42	BARREL SHROUD REAR PORT 炮管套筒后连接件
43	BARREL SHROUD SEALING RING 炮管套筒密封圈 (2pcs)
44-1	MUFFLE LEFT 消音器左
44-1	MUFFLE RIGHT 消音器右
45	BARREL HEAD 炮管套头

Parts specific to .22 caliber

652001-10-22 Barrel

652001-2-22 Bolt

652001-3-22 Bolt Probe O-Ring

1. 11				

[illegible]

