



## EXPLODED VIEW & PARTS LIST

# MODEL CFRNP17SX FIRE

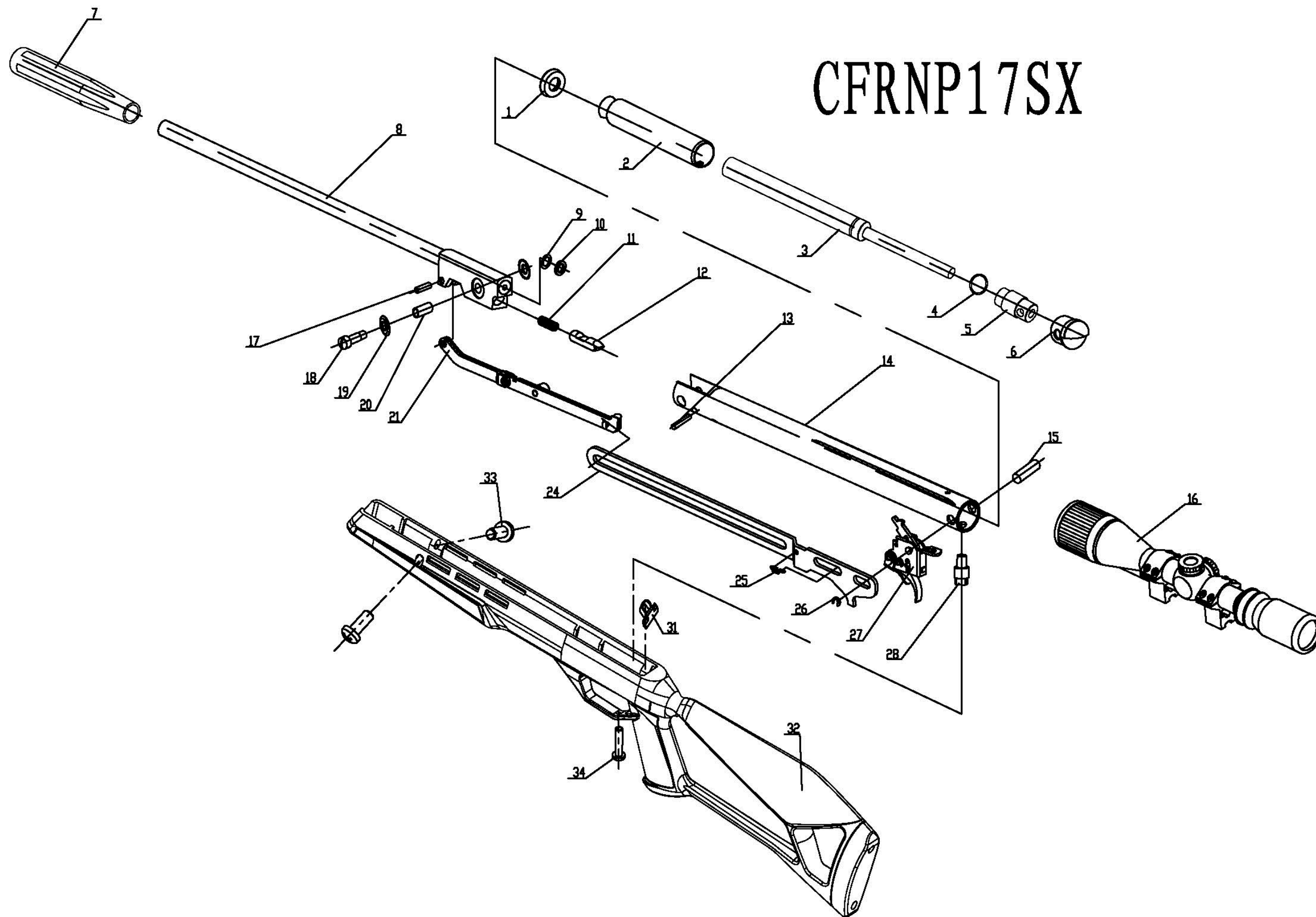


Manufacture Start Dates: 6/01/15

Last Update 9/7/16

CROSMAN CORPORATION  
7629 ROUTES 5 & 20  
BLOOMFIELD, NY 14469  
Phone: 1-800-724-7486  
Parts Order Fax: 585-657-5405  
[www.crosman.com](http://www.crosman.com)

- This EVP and parts list is intended to be an informational guide in ordering parts. It is not instructional material and we therefore assume no responsibility for those who use the same without proper factory training.
- Please order by part number and description.
- Check or money order for the total price must accompany the order.
- For current prices contact Crosman Corporation at 1-800-724-7486 or visit our website [www.crosman.com](http://www.crosman.com)



CFRNP17SX

CFRNP17SX

| Item | BAM Part Number            | Description                       | CFRNP17SX | Revisional Date |
|------|----------------------------|-----------------------------------|-----------|-----------------|
| 1    | <b>B18-04-1B</b>           | <b>Piston Seal</b>                | 1         |                 |
| 2    | <b>C8M22-03-100</b>        | <b>Piston</b>                     | 1         | 08/24/16        |
| 3    | <b>BT9M22-00-5A</b>        | <b>gas spring</b>                 | 1         |                 |
| 4    | C8M22-00-2                 | Spring snap ring                  | 1         | 08/24/16        |
| 5    | C8M22-00-1                 | Rear Base                         | 1         | 08/24/16        |
| 6    | <b>BT9M22-00-3</b>         | <b>Tube Cover</b>                 | 1         |                 |
| 7    | CD1K77NP-01-1              | Muzzle Break                      | 1         | 08/29/13        |
| 8    | <b>B19-7-01-100B</b>       | <b>Barrel Assembly</b>            | 1         |                 |
| 9    | <b>B22-00-1A</b>           | <b>Adjust washer</b>              | 0-2       |                 |
| 10   | <b>B12-00-14</b>           | <b>Breach Seal</b>                | 1         | 04/24/10        |
| 11   | <b>B15-01-2A</b>           | <b>Jam Spring</b>                 | 1         |                 |
| 12   | <b>BT9M22-01-5D</b>        | <b>Alive Jam</b>                  | 1         |                 |
| 13   | BT9M22-00-4                | Dead Jam                          | 1         |                 |
| 14   | C8M22NP-02-00A             | Compression Tube Assembly         | 1         |                 |
| 15   | B18-00-7                   | Fixed Pin                         | 1         |                 |
| 16   | 4X32D CenterPoint          | Scope                             | 1         | 08/24/16        |
| 17   | B12-00-1B                  | Link Pin                          | 1         |                 |
| 18   | <b>B19-2-00-2A</b>         | <b>Break Bolt</b>                 | 1         | 08/28/13        |
| 19   | B18-00-15B                 | Washer                            | 2         |                 |
| 20   | B18-01-1C                  | Bushing                           | 1         |                 |
| 21   | <b>B18-07-00A</b>          | <b>Lever Assembly</b>             | 1         |                 |
| 24   | <b>B18-00-5B</b>           | <b>Bear Trap Lever</b>            | 1         |                 |
| 25   | B19-19-00-5                | Safety Spring                     | 1         |                 |
| 26   | <b>GB896-86 3</b>          | <b>E-Ring</b>                     | 1         |                 |
| 27   | <b>B19-2-05-00</b>         | <b>Trigger Pack Assembly</b>      | 1         | 08/24/16        |
| 28   | B18-00-9                   | Stock link pin                    | 1         |                 |
| 31   | B19-2-00-1                 | Stock Lug Brace                   | 1         |                 |
| 32   | <b>CF4NP17SX-300</b>       | <b>Stock assembly</b>             | 1         |                 |
| 33   | <b>GB/T 818-2000 M5x14</b> | <b>Pan Head Screws - nylok</b>    | 2         |                 |
| 34   | GB823-88 M6X20             | Screw, Trigger Guard Rear - nylok | 1         |                 |

- *Parts in BOLD are available for order. Other parts in the list may also be available.*