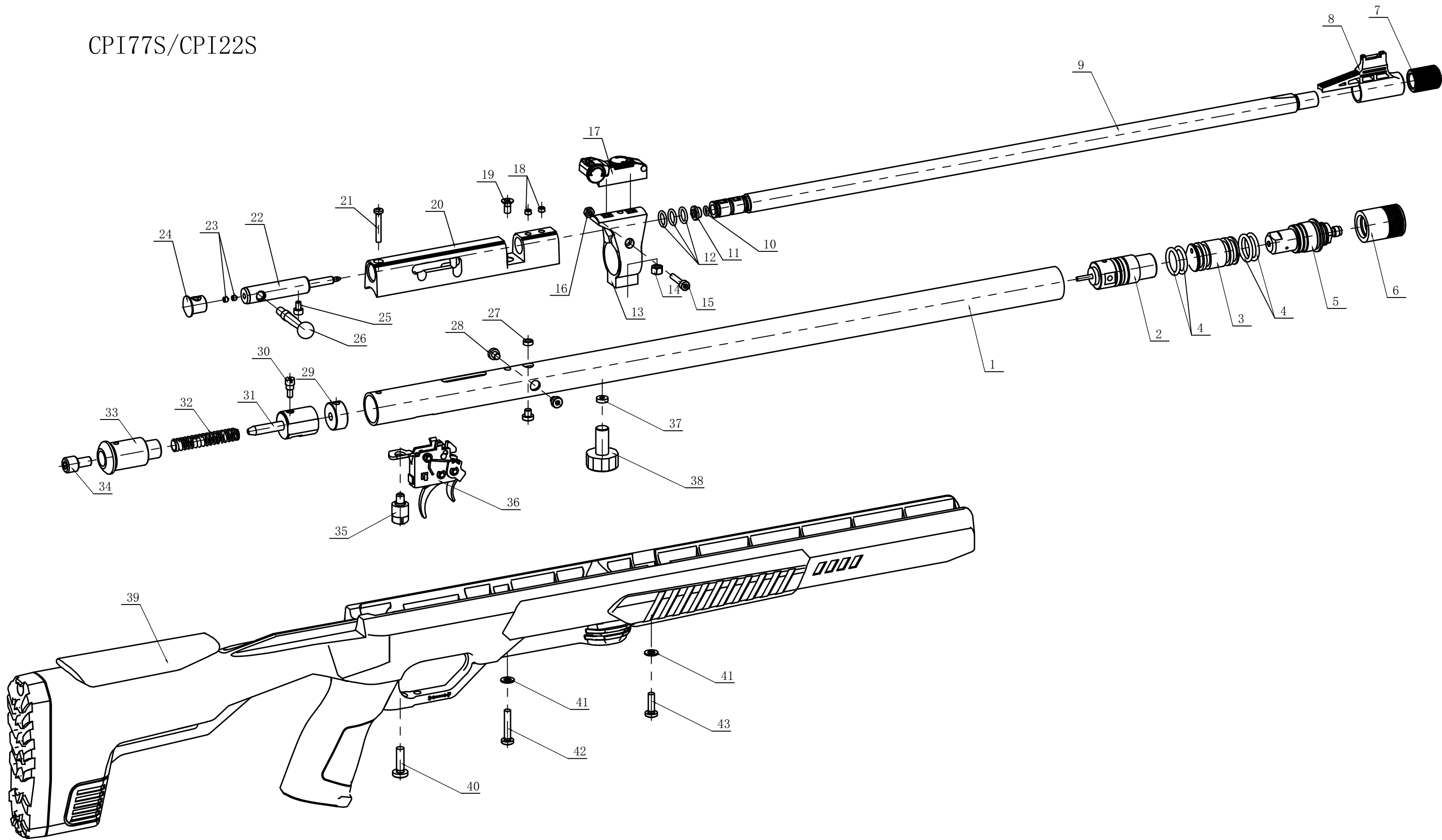
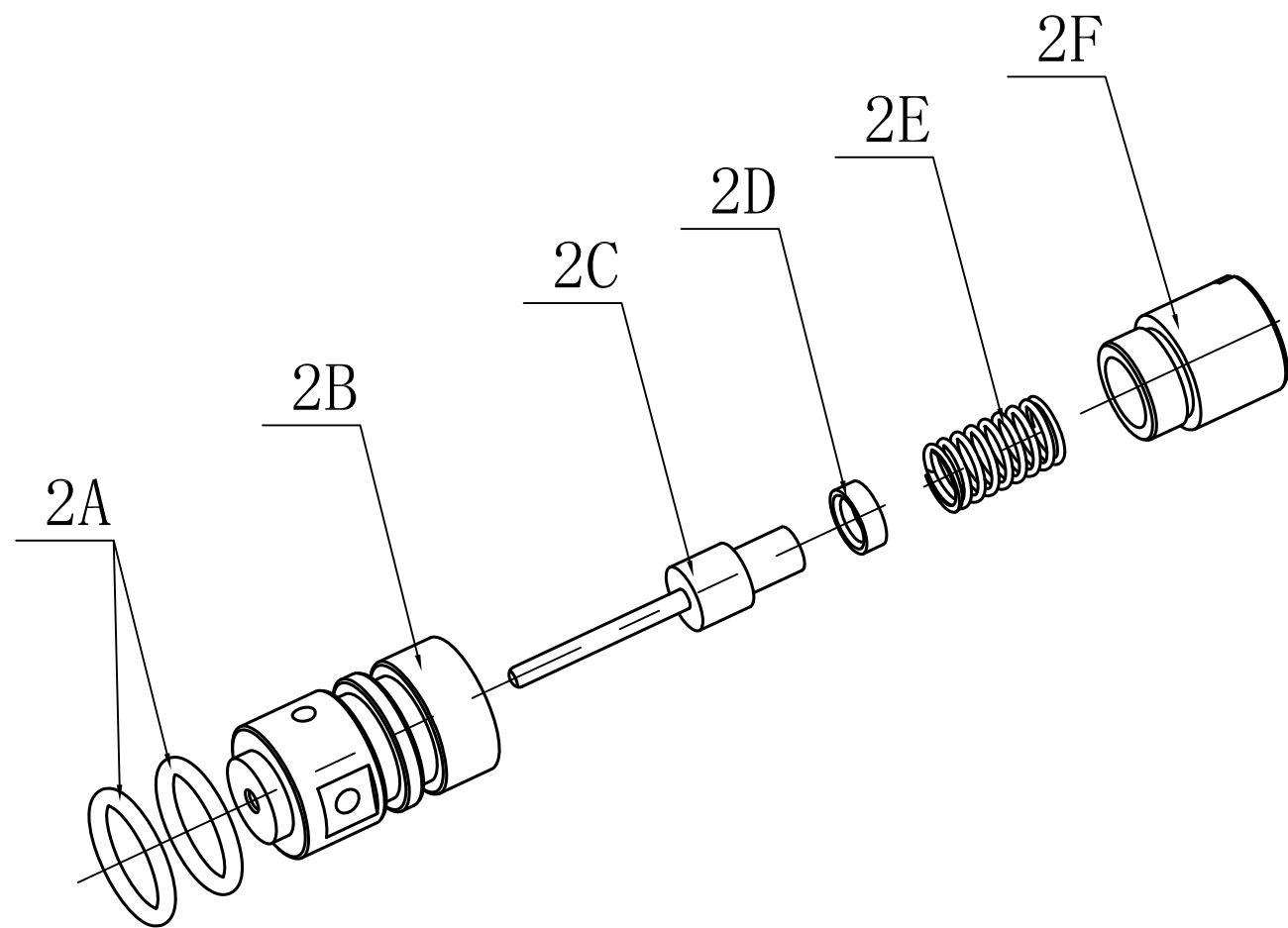


CPI77S/CPI22S

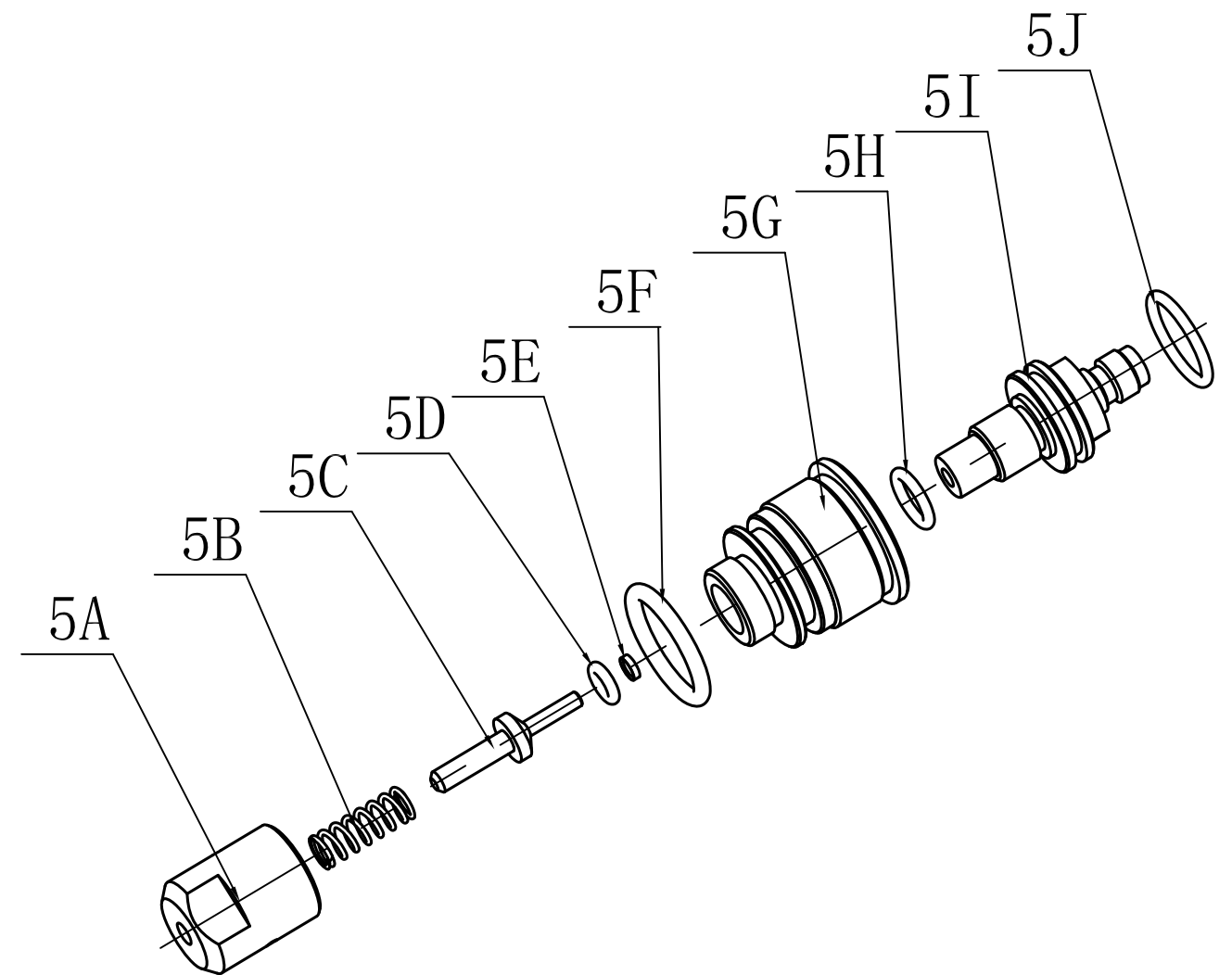


CPI77S/CPI22S			
Item NO.	Part Number	Description	Quantity
1	B57-3-00-11	E-tube	1
2	B57-1-03-00	Valve Assembly	1
3	B56-00-5	Gauge Port	1
4	GB/T3452.1-2005 17*2.65	O-Ring	4
5	B56-1-04-00	Fill Adapter Assembly	1
6	B56-00-9	Filler Cap	1
7	B19-40-01-3	Threaded Cap	1
8	B57-3-01-3	Front Sight Assembly	1
9	B57-3-01-1	Barrel, .177 Cal	1
9	B57-3-01-1 (5.5)	Barrel, .22 Cal	1
10	S6-00-21	O-Ring, .177 Cal	1
10	S6-00-21 (5.5)	O-Ring, .22 Cal	1
11	S6-01-3	Barrel Bushing, .177 Cal	1
11	S6-01-3 (5.5)	Barrel Bushing, .22 Cal	1
12	GB/T 3452.1-2005 9.5*1.8	O-Ring	3
13	B57-3-00-10	Barrel Band	1
14	GB/T 6175-2000 M5	Nut	1
15	GB/T 70.1-2000 M4*20	Screw	1
16	GB/T 6170-2000 M4	Nut	1
17	MF-02-00	Rear Sight Assembly	1
18	B56-00-24	Fix Screw	2
19	GB/T 819.1-2000 M5*10	Screw, Nylon	1
20	B57-3-01-2	Breech	1
21	GB823-88 M4*25	Screw	1
22	B57-3-00-1	Push Rob, .177 Cal	1
22	B57-3-00-1 (5.5)	Push Rob, .22 Cal	1
23	GB/T 78-2007 M4*4	Fix Screw	2
24	B56-00-8	Breech Plug	1
25	GB/T 70.1-2000 M4*6 10.9级	Screw	1
26	B56-00-13	Handle, Bolt	1
27	B56-00-22	Seal Ring	1
28	B57-1-00-3	Valve, Screw	3
29	B56-00-3	Connecting Sleeve	1
30	B57-3-00-15	Hammer Pin	1
31	B57-3-00-4	Hammer	1
32	B57-00-12	Hammer Spring	1
33	B57-00-7	Plug, Tube	1
34	B57-00-23	Adjusting Screw	1
35	B57-00-2	Connecting, Screw	1
36	S6-05-00	Trigger Assembly	1
37	S6-00-17 (M10)	PTEE gasket	1
38	B58-00-16	Gauge, 3000PSI	1
39	CPB-100	Stock Assembly	1
40	GB/T 823-88 M6*20	Screw	1
41	GB/T 97.1-2002 5	Washer	2
42	GB/T 818-2000 M5*25	Screw	1
43	GB/T 818-2000 M5*16	Screw	1



**Item 2, Valve Assembly**

Item NO.	Part Number	Description	Quantity
2A	GB/T3452.1-2005 17*2.65	O-Ring	2
2B	B57-1-03-1	Gas Cell	1
2C	B57-03-100	Valve Stem Assy	1
2D	B50-03-13	Copper Bush	1
2E	B57-03-2	Reset Spring	1
2F	B56-03-3	Gas Cell Plug	1



**Item 5, Fill Adapter Assembly**

Item NO.	Part Number	Description	Quantity
5A	B58-04-6	Bottom Cover	1
5B	B58-04-7	Valve Spring	1
5C	B58-04-5	Valve	1
5D	GB/T3452.1-2005 4*1.8	O-Ring	1
5E	B58-04-8	Valve Sleeve	1
5F	GB/T3452.1-2005 17*2.65	O-Ring	1
5G	B56-1-04-3	Joint	1
5H	GB/T 3452.1-2005 7.5*1.8	O-Ring	1
5I	B56-1-04-2	Pump Adaptor	1
5J	GB/T 3452.1-2005 14*1.8	O-Ring	1