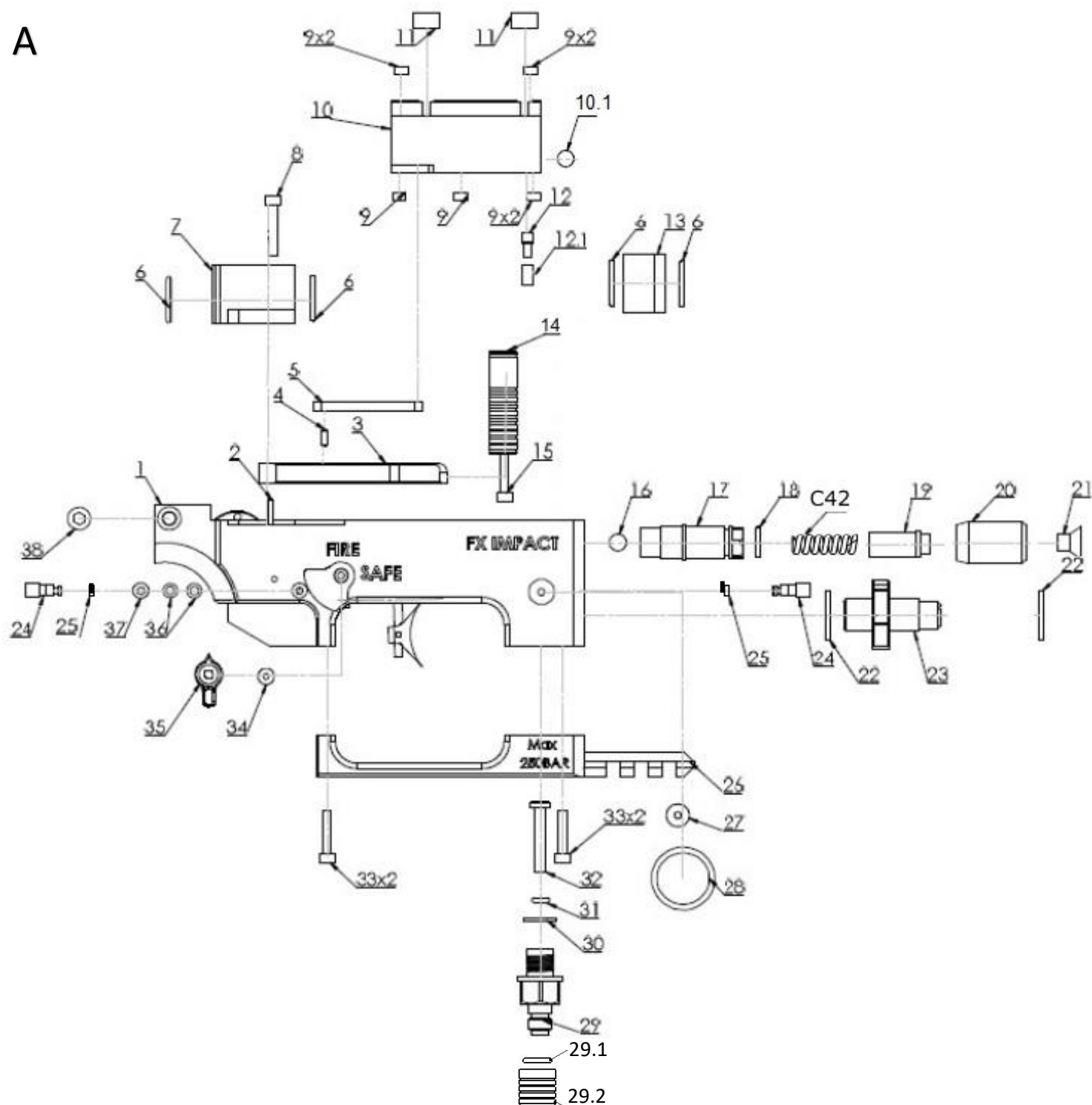


Model	Other model names	Date	Revision	Revision date
FX Impact MkII, Power Plenum		2019-12-09	EN.20.05	2020-08-19

A



This exploded perspective view illustrates the assembly of a multi-layered electronic device. The components are numbered as follows:

- 1**: A curved, possibly flexible, outer layer or gasket.
- 2**: A rectangular frame or support structure.
- 3**: A vertical plate or divider with multiple slots.
- 4**: A vertical plate or divider with a circular cutout.
- 5**: A small, rectangular component, likely a microchip or sensor, shown in multiple locations.
- 6**: A small rectangular component, possibly a connector or interface module.
- 7**: A central rectangular module featuring a logo with the letters "FX".
- 8**: A small rectangular component, possibly a connector or interface module.
- 9**: A small rectangular component, possibly a connector or interface module.
- 10**: A small rectangular component, possibly a connector or interface module.
- 11**: A small rectangular component, possibly a connector or interface module.
- 12**: A small rectangular component, possibly a connector or interface module.
- 13**: A small rectangular component, possibly a connector or interface module.
- 14**: A long, thin rectangular component, possibly a battery or a long sensor strip.
- 15**: A small rectangular component, possibly a connector or interface module.
- 16**: A small rectangular component, possibly a connector or interface module.
- 17**: A rectangular component with a central cutout, possibly a housing or a base plate.
- 18**: A small rectangular component, possibly a connector or interface module.
- 19**: A long, thin rectangular component, possibly a battery or a long sensor strip.
- 20**: A small rectangular component, possibly a connector or interface module.
- 21**: A small rectangular component, possibly a connector or interface module.
- 22**: A small rectangular component, possibly a connector or interface module.
- 23**: A small rectangular component, possibly a connector or interface module.
- 24**: A small rectangular component, possibly a connector or interface module.
- 25**: A rectangular component, possibly a housing or a base plate.
- 26**: A small rectangular component, possibly a connector or interface module.
- 27**: A small rectangular component, possibly a connector or interface module.
- 28**: A small rectangular component, possibly a connector or interface module.
- 29**: A small rectangular component, possibly a connector or interface module.
- 30**: A small rectangular component, possibly a connector or interface module.
- 31**: A small rectangular component, possibly a connector or interface module.
- 31.1**: A small rectangular component, possibly a connector or interface module.
- 31.2**: A small rectangular component, possibly a connector or interface module.
- 32**: A small rectangular component, possibly a connector or interface module.
- 33**: A small rectangular component, possibly a connector or interface module.
- 34**: A small rectangular component, possibly a connector or interface module.
- 35**: A small rectangular component, possibly a connector or interface module.

Model	Other model names	Date	Revision	Revision date
FX Impact MkII, Power Plenum		2019-12-09	EN.20.05	2020-08-19

NO	ART. NO	DESCRIPTION	NO	ART. NO	DESCRIPTION
A1	19690	Trigger Block Impact, black	B9	19748	Grub screw M3x7, <i>until ser.no. 191084</i>
A1	19699	Trigger Block Impact, silver	B9	19643	Grub screw, Feeding pin, M4, <i>from serial no.191084</i>
A1	20290	Trigger block Impact Bronze	B10	19614	Pellet probe holder, <i>revision 4, until serial No. 191084, (use with 19748)</i>
A2	1501	Cylindrical pin 2,5m6x24	B10	19614	Pellet probe holder, <i>revision 5, from serial no. 191084, (use with 19643)</i>
A3	19638	Sidelever Imp, Crown, Str	B11	19601	Cylindrical pin 2h6x6
A4	19026	Cylindrical pin 2,5m6x6	B12	19612	Pellet probe guide
A5	19021	Side lever linkage	B13	2505	Countersunk screw m4x10
A6	19718	O-ring 14x1,5 NBR 70	B14	19642	Guiding Plate Impact
A7	19650	Rear Support Impact	B15	2527	Socket head cap screw M3x10
A8	19740	Socket head cap screw M3x22	B16	N/A	N/A
A9	19652	Puck 5,0	B17	19779	Cheek piece for Impact (january 2019)
A10	19691	Reloading block Impact	B18	11506	Socket head cap screw M3x30
A10.1	2531	Rubberball 5,54 NBR 70	B19	19667	Reloading Bar
A11	19653	Puck 9,9	B20	19846	Grubb screw M6x6
A12	19713	Socket head cap screw M3x6	B21	19698	Rear block Impact
A12.1	19676	Sleeve reloading	B22	19763	O-ring 9x1,5 NBR90
A13	19651	Front Support Impact	B23	5113	O-ring 20,24x2,62 NBR70
A14	19611	Side lever handle B2-WC-IM	B24	19788	Valvetube End, Impact, Power Plenum
A15	11060	Socket head cap screw M3x18	B25	19787	Valvetube Impact, Power Plenum
A16 (.35)	5110	Rubberball 4,75 NBR70	B25.1	19726	O-ring 5.5x1.5 NBR70
A17	19616	Valvestop Impact	B25.2	19768	O-ring 2.84x2.62 PUR90
A18	19722	O-ring 9x1,5 NBR 70	B26	19603	Valve nut impact
A19	20277	Valvestop Impact, Power Plenum	B27	19742	Grub screw M3x8
A20	19669	Valve adjuster knob Impact	B28	20275	Valvepin complete Impact, Power Plenum
A21	19717	Countersunk screw m6x8	B29	19677	O-ring 10,5x2 NBR 70
A22	11507	Rubber/Steel Washer	B30	19786	Valvehouse, Impact, Power Plenum
A23	19659	Bottle connector Impact	B31	20117	Magazine bracket Impact MkII
A24	19694	Brass adapter Impact	B31.1	20116	Locking arm Magazine bracket MkII
A25	19761	O-ring 2,2x1 NBR 70	B31.2	16093	Spring 0,3x2x10
A26	19689	Trigger guard Impact, black	B32	19224	Cup point grub screw M8x8
A26	19617	Trigger guard Impact, silver	B33	19713	MC6S M3x6
A27	19762	X-ring 3,63x2,62 NBR 70	B34	19762	X-ring 3,63x2,62 NBR 70
A28	19775	Manometer 28mm with black cover	B35	19775	Manometer 28mm with black cover
A29	16303	Quick connector short	C1	19604	Hammerseat
A29.1	4528	O-ring 7.66x1.78 NBR70	C1	20392-C	Hammerseat Impact .35 cpl
A29.2	19910	Dust Cover - Quick Connection	C2	N/A	N/A
A30	19720	O-ring 10x1 NBR 90	C3	20272	Hammer Sleeve, Impact, Power Plenum
A31	5107	O-ring 2,9x1,78 PUR 90	C4	19647	Valverod
A32	19005	Inlet valve rod - Blue	C5	20270	Hammer V2 Power Plenum
A33	19682	Socket head cap screw M3x16	C6	20271	Hammer weight Power Plenum
A34	2504	Countersunk screw M3x6	C7	2604	Hammerspring 52mm
A35	19610	Safety	C8	19609	Spring holder Impact
A36	19736	Plastic Washer 5,3x3,1x1	C9	19683	Conical grub screw M3x18
A37	19715	Socket head cap screw M3x5	C10	19602	Hammer adjuster
A38	14500	Socket head cap screw M5x16	C11	19715	Socket head cap screw M3x5
B1	19618	Recoilpad	C12	2504	Countersunk screw M3x6
B2	19728	Adjustment Screw Recoilpad Impact	C13	19693	Impact sprintholder
B3	19646	Left plate Impact	C14	2508	Countersunk screw M3x10
B4	19645	Right plate Impact	C15	19608	Power adjuster Impact
B5	12610	Socket head cap screw M3x8	C16	11501	Spring 0,5x2,5x6,1
B6	19606	Magazine holder Impact	C17	4066	Steel ball 3mm
B7	5110	Rubberball 4,75 NBR 70	C18	11501	Spring 0,5x2,5x6,1
B8	19641	Pellet probe Impact .177	C19	4066	Steel ball 3mm
B8	19620	Pellet probe Impact .22	C20	19710	Houge Grip Rubber AR15
B8	19621	Pellet probe Impact .25	C21	19743	Socket head cap screw M6x20
B8	19619	Pellet probe Impact .30	C22	19636	Triggersear
B8	19798	Pellet probe Impact .35	C23	11504	Spring 0,32x3,2x14,4 v2.3

Model	Other model names	Date	Revision	Revision date
FX Impact MkII, Power Plenum		2019-12-09	EN.20.05	2020-08-19

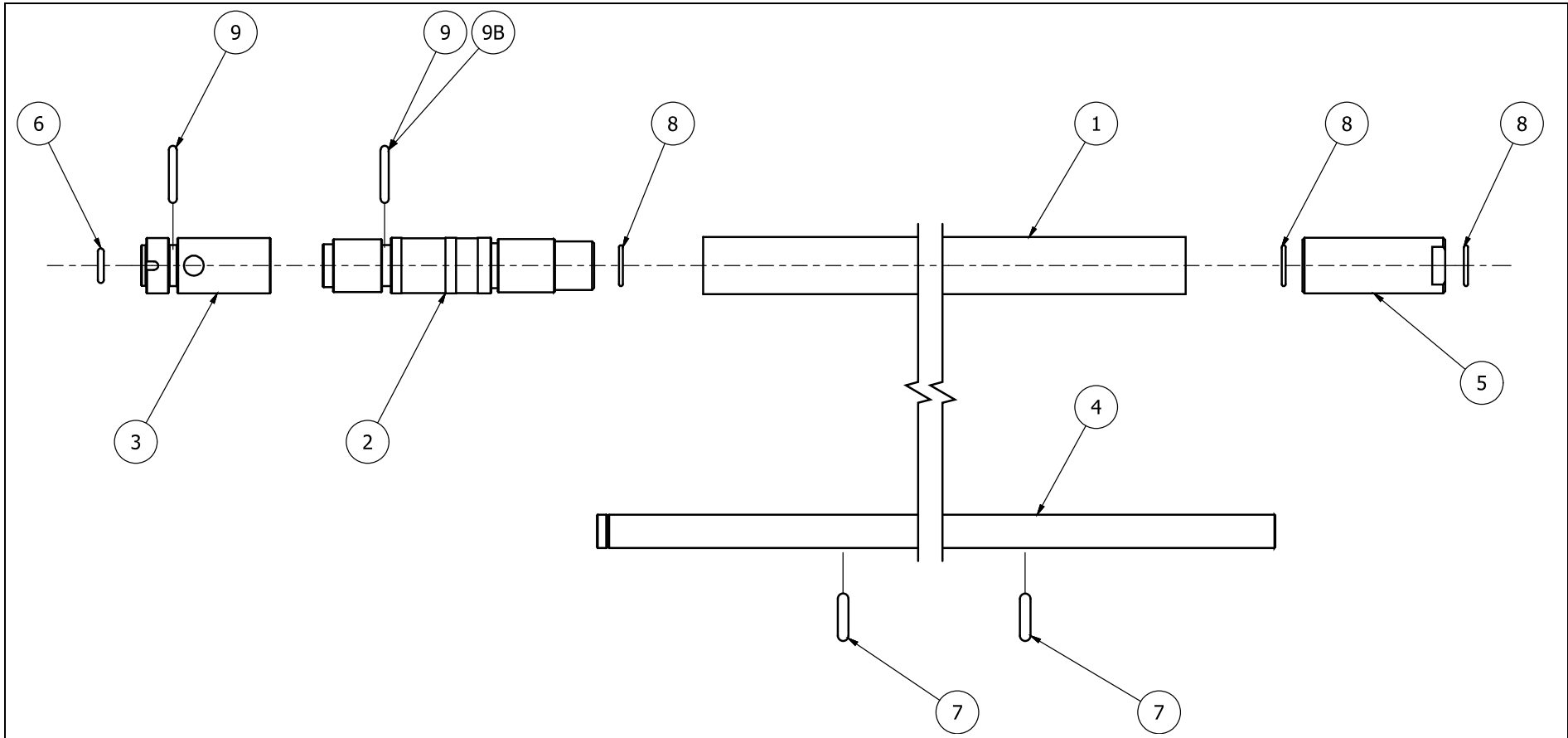
C24	19742	Grub screw M3x8	C36	19697-1	Regulator house
C25	11062	Adj screw second stage, soft	C37	19695	Regulator Screw Impact
C26	2500	Grub screw M3x6	C38	19731	O-ring 2x1 NBR 90
C27	19613	Triggermount Impact	C39	19790	O-ring 10x1,5 NBR90
C28	11525	Triggerroll	C40	19040	Cylindrical pin 2m6x23,5
C29	2504	Countersunk M3x6	C41	19225	O-ring 7,5x2 NBR70
C30	2500	Grub screw M3x6	C42	2602	Spring 1x6,2x45
C31	19637	Triggerbase Impact	C42	2600 (.35)	Spring CS 0,6x5,8x45
C32	19136	Adjustable triggerblade	D1	19644	Rail Picatinny x3 Impact Black
C33	19109	O-ring 4x1,5 NBR 70	D1	19639	Picatinny Rail x3 Impact Silver
C34	19696	Regulator piston (long) (May 2017>)	D2	19684	Socket head cap screw M5x8
C35	19109	O-ring 4x1,5 NBR 70	D3	2554	Socket head cap screw M3x25

FX Service:

Serviceusa@fxairguns.com

(866) 639-0772

Model	Other model names	Date	Revision	Revision date
X-barrel		2020-04-15	EN.	-

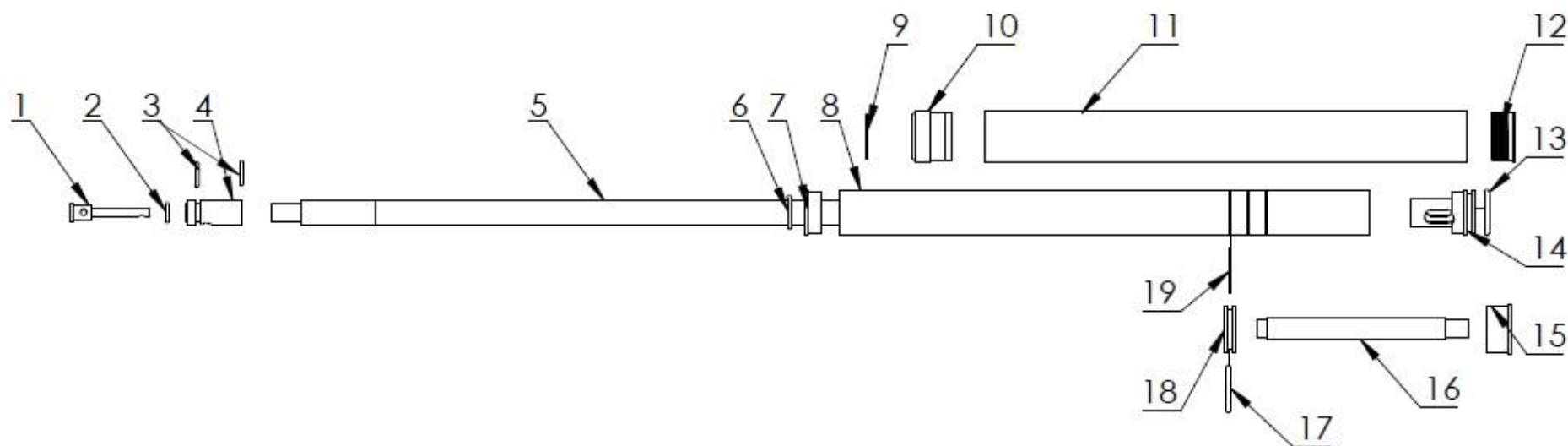


Model	Other model names	Date	Revision	Revision date
X-barrel		2020-04-15	EN.	-

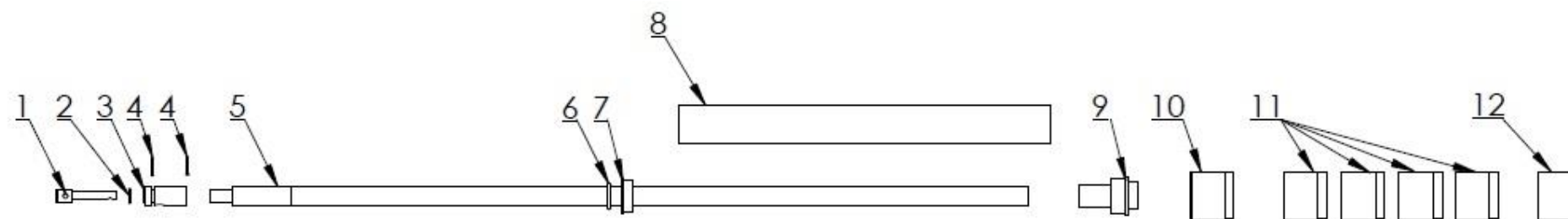
NO	ART. NO	DESCRIPTION	NO	ART. NO	DESCRIPTION
<b>.177</b>			<b>.25 (600)</b>		
1	19973	Barrel House 14x1x435mm	1	19972	Barrel House 550mm
2	19960	Barrel attachment .177	2	19962	Barrel attachment .25
3	19628	Barrel inlet .177 Impact/Crown	3	19670	Barrel inlet .25 Impact/Crown
4	19964	STX Liner .177 500mm Pellet A	4	19966	STX Liner .25 600mm Pellet A
5	19968	Liner Lock .177	5	19970	Liner lock .25
6	2529	O-ring 4,3 x 1,5 NBR 70	6	2575	O-ring 6,35 x 1,27 NBR 70
7	19958	O-ring 6,02 x 2,62 NBR 70	7	19953	O-ring 5,5 x 2 NBR 70
8	19837	O-ring 7 x 1 NBR 70	8	19954	O-ring 9 x 1 NBR 70
9	19703	O-ring 10 x 2 NBR 70	9	19703	O-ring 10 x 2 NBR 70
<b>.22 (485)</b>			<b>.30 (600)</b>		
1	19973	Barrel House 14x1x435mm	1	19972	Barrel House 550mm
2	19961	Barrel attachment .22	2	19963	Barrel attachment .30
3	19629	Barrel inlet .22 Impact/ Crown	3	19671	Barrel inlet .30 Impact/Crown
4	19965	STX Liner .22 500mm Pellet A	4	19967	STX Liner .30 600mm Pellet A
5	19969	Liner lock .22	5	19971	Liner lock .30
6	19726	O-ring 5,5 x 1,5 NBR 70	6	19209	O-ring 7,5 x 1,5 NBR 70
7	19952	O-ring 5,23 x 2,62 NBR 70	7	2575	O-ring 6,35 x 1,27 NBR70
8	19117	O-ring 8 x 1 NBR 70	8	19145	O-ring 10 x 1 NBR 70
9	19703	O-ring 10 x 2 NBR 70	9	19703	O-ring 10 x 2 NBR 70
			9B	19210	O-ring 11 x 1,5 NBR 70

Model	Other model names	Date	Revision	Revision date
Barrel kit Impact		2018-06-20	EN.20.01	2020-04-07

**A**



**B**



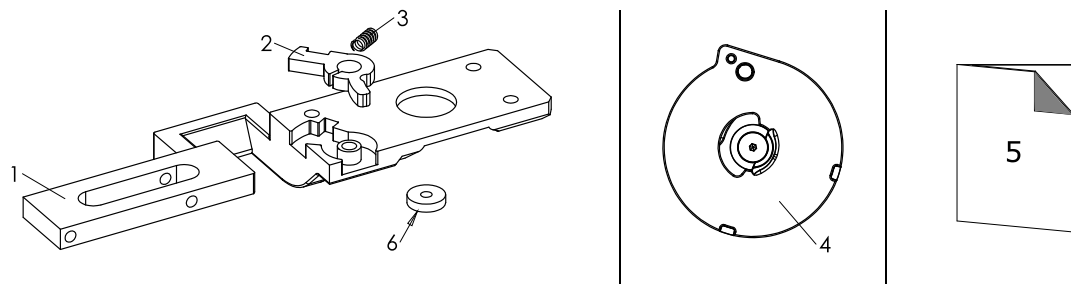
Model	Other model names	Date	Revision	Revision date
Barrel kit Impact		2018-06-20	EN.20.01	2020-04-07

NO	ART. NO	DESCRIPTION	NO	ART. NO	DESCRIPTION
A1-4.5	19641	Pellet probe Impact .177	A17-4.5, 5.5	5101	O-ring 20 x 2,5 NBR 70
A1-5.5	19620	Pellet probe Impact .22	A18-4.5, 5.5	19747	Muzzle stabilizer
A1-6.35	19621	Pellet probe Impact .25	A19	19675	Delrin ring stop
A1-7.62	19619	Pellet probe Impact .30			
A2-4.5	2529	O-ring 4,3 x 1,5 NBR 70	B1-6.35	19621	Pellet probe Impact .25
A2-5.5	19726	O-ring 5,5 x 1,5 NBR 70	B1-7.62	19619	Pellet probe Impact .30
A2-6.35	4526	O-ring 6,4 x 1,3 NBR 70	B2-6.35	4526	O-ring 6,4 x 1,3 NBR 70
A2-7.62	19209	O-ring 7,5x1,5 NBR 70	B2-7.62	19209	O-ring 7,5x1,5 NBR 70
A3	19703	O-ring 10 x 2 NBR 70	B3	19703	O-ring 10 x 2 NBR 70
A4-4.5	19628	Barrel inlet .177 Impact/Crown	B4-6.35	19670	Barrel inlet .25 Impact/Crown
A4-5.5	19629	Barrel inlet .22 Impact/ Crown	B4-7.62	19671	Barrel inlet .30 Impact/Crown
A4-6.35	19670	Barrel inlet .25 Impact/Crown	B5-6.35	19707	Barrel 6,35-14-600 Impact
A4-7.62	19671	Barrel inlet .30 Impact/Crown	B5-7.62	19708	Barrel 7,62-14-600 Impact
A5-4.5	19744	Barrel 4,50-14-485 Impact	B6	12045	O-ring 13,95x2,62
A5-5.5	19706	Barrel 5,50-14-485 Impact	B7	19737	Shroud Bushing Impact
A5-6.35	19707	Barrel 6,35-14-600 Impact	B8	19692	270mm Shroud for Impact
A5-7.62	19708	Barrel 7,62-14-600 Impact	B9-6.35	19750	Compensator fixed 6,35
A6	12045	O-ring 13,95x2,62	B9-7.62	19739	Compensator fixed 7,62
A7	19640	25mm end for telescopic shroud M23x1	B10	19687	Shroud Start 3 35mm Impact
A8-4.5, 5.5	19661	Telescopicshroud .22 Impact	B11	19688	Shroud Midpart Impact 35mm
A8-6.35, 7.62	19660	Telescopicshroud .25/.30 Impact	B12-6.35	19663	Shroud endcap .25 35mm
A9	19732	O-ring 25x1 NBR 70	B12-7.62	19664	Shroud endcap .30 35mm
A10	19658	Shroudstop 28mm			
A11	19692	270mm Shroud for Impact			
A12-6.35	19655	Impactmuzzle 8,0			
A2-7.62	19656	Impactmuzzle 9,0			
A13	5113	O-ring 20,24x2,62			
A14-4.5	19657	Compensator teleshroud			
A14-5.5	19657	Compensator teleshroud			
A14-6.35	19625	Compensator teleshroud			
A14-7.62	19626	Compensator teleshroud			
A15-4.5, 5.5	19733	Impact muzzel .177-.22			
A16-4.5, 5.5	19746	Muzzle extender			

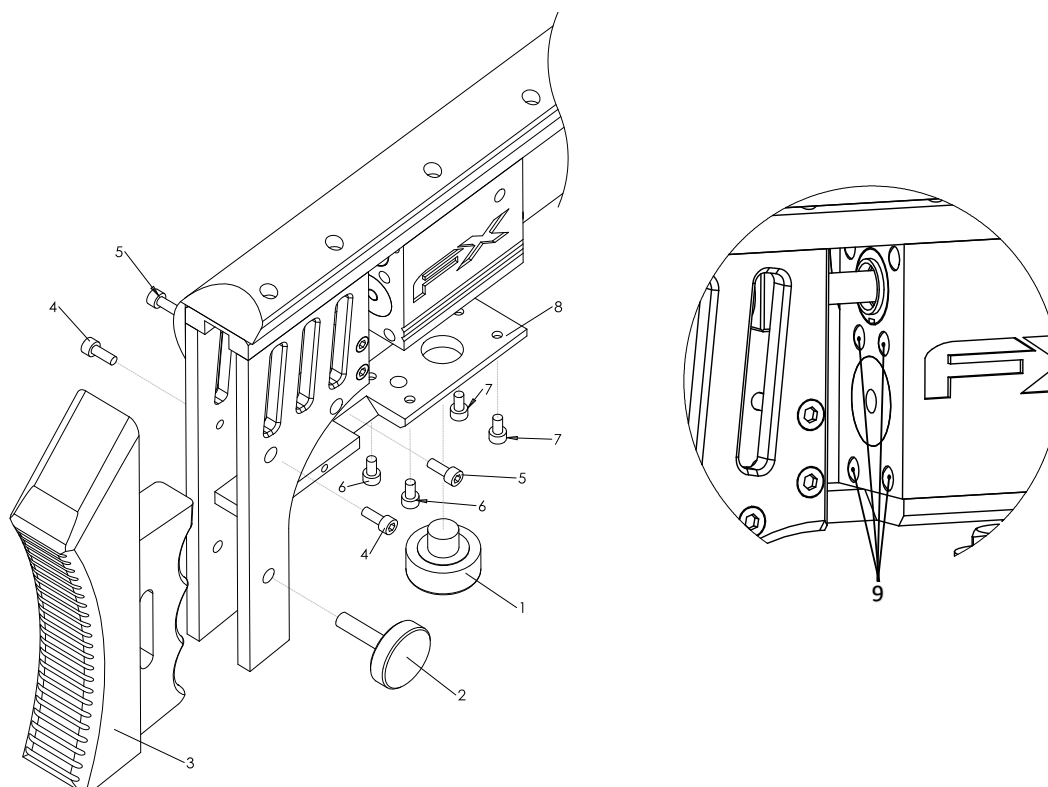


## Magazine Bracket replacement

The package contains:



POSITION	ARTICLE NO.	DESCRIPTION	QUANTITY
1	20117	Magazine bracket, Impact	1
2	20116	Locking arm Magazine bracket	1
3	16093	Spring 0.3x2x10	1
4	-	Magazine FX, Side-Shot	1
5	19785	User manual, Magazine Bracket replacement	1
6	19723-1	Plastic washer	1 (Optional to replace)



**WARNING!** Unscrew and remove the air bottle and make sure the rifle is drained of air! Both of pressure gauges must be on zero air pressure!

1 - Unscrew and remove Pressure Gauge (*position 1*)

2 - Unscrew and remove Shoulder-pad Adjuster Screw (*position 2*) and remove Recoil-Pad (*position 3*)

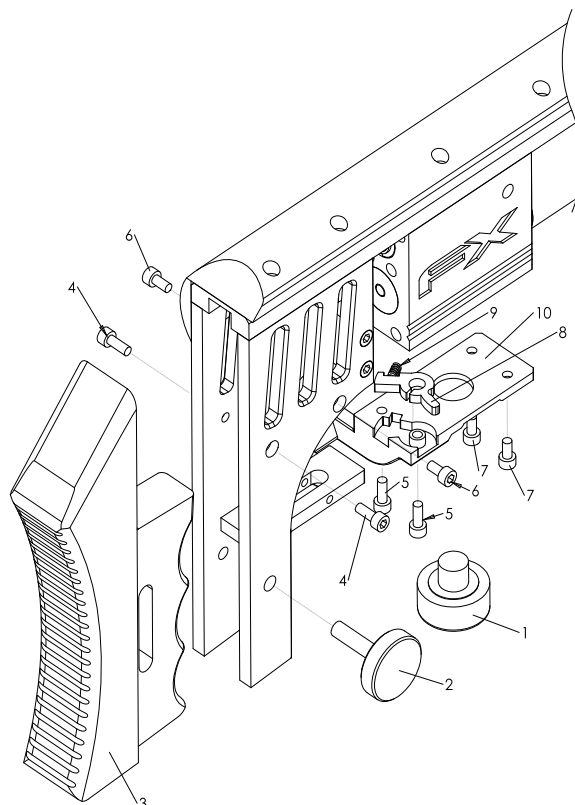
3 - Unscrew and remove the screws (*positions 4 and 5*), Screw M3x8

4 - Unscrew and remove the screws (*positions 6 and 7*), Screw M3x6

5 - Lift of plate holder (*position 8*)

6 - Remove four rubber balls (*position 9*)

## Magazine Bracket replacement



**WARNING!** Unscrew and remove the air bottle and make sure the rifle is drained of air! Both of pressure gauges must be on zero air pressure!

- 1 - Put locking arm (*position 8*) and Spring (*position 9*) on the place in magazine bracket (*position 10*)
- 2 - Place magazine bracket, with locking arm and spring, on the place between Impact plates
- 3 - Fix the magazine bracket (*10*) with screws M3x6 (*position 7*)
- 4 - Fix the magazine bracket (*10*) with screws M3x8 (*position 5*)
- 5 - Fix the magazine bracket (*10*) with screws M3x6 (*position 6*)
- 6 - Fix the magazine bracket (*10*) with screws M3x8 (*position 4*)
- 7 - Put the Recoil-Pad (*position 3*) on the place and fix it with Shoulder-pad Adjuster Screw (*position 2*)
- 8 - Put the Pressure Gauge (*position 1*) on the place and tighten normally.
- 9 - Screw the air bottle on the rifle and fill with air
- 10 – Check the pressure gauge for the leaks, if it leaks tighten it slightly. (*Replace to the new plastic washer, below the pressure gauge, ONLY if the pressure gauge is not holding tight!*)

