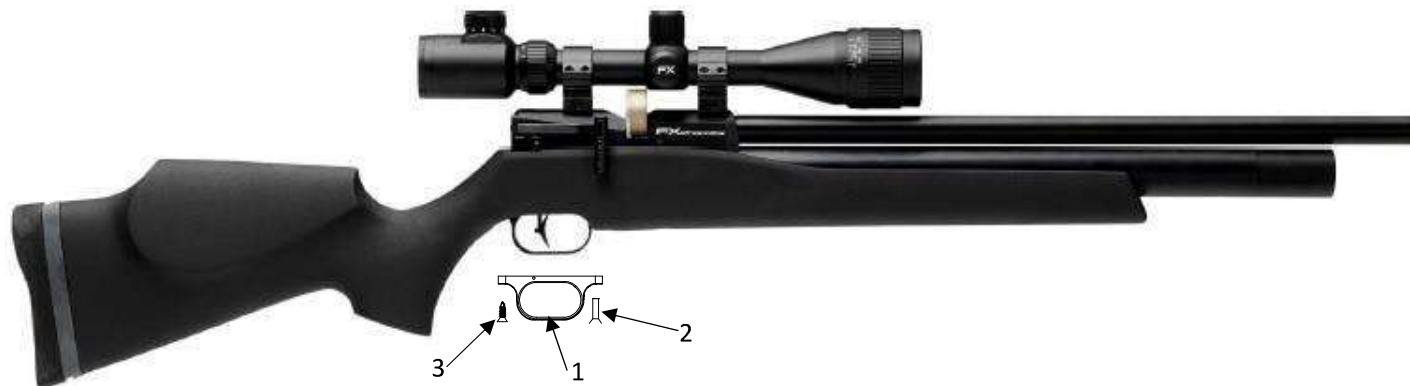
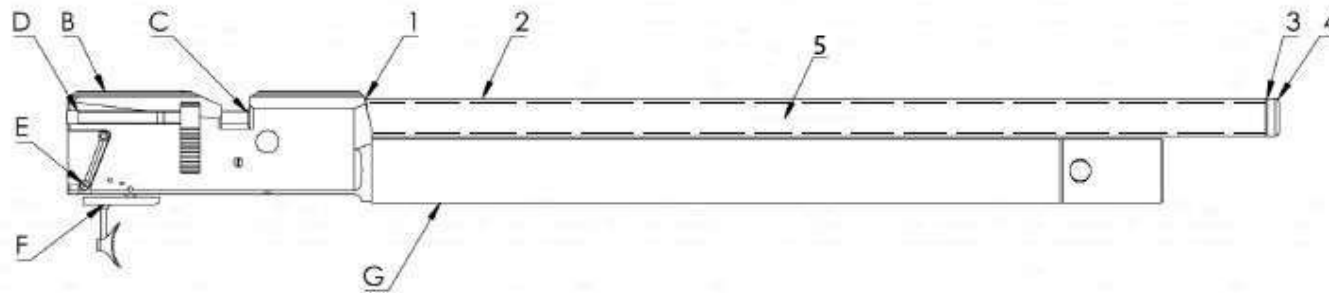


| Model | Other model names | Date | Revision | Revision date |
|---------------|-------------------|------------|----------|---------------|
| FX Streamline | | 2018-06-25 | EN.21.03 | 2021-05-12 |

STOCK

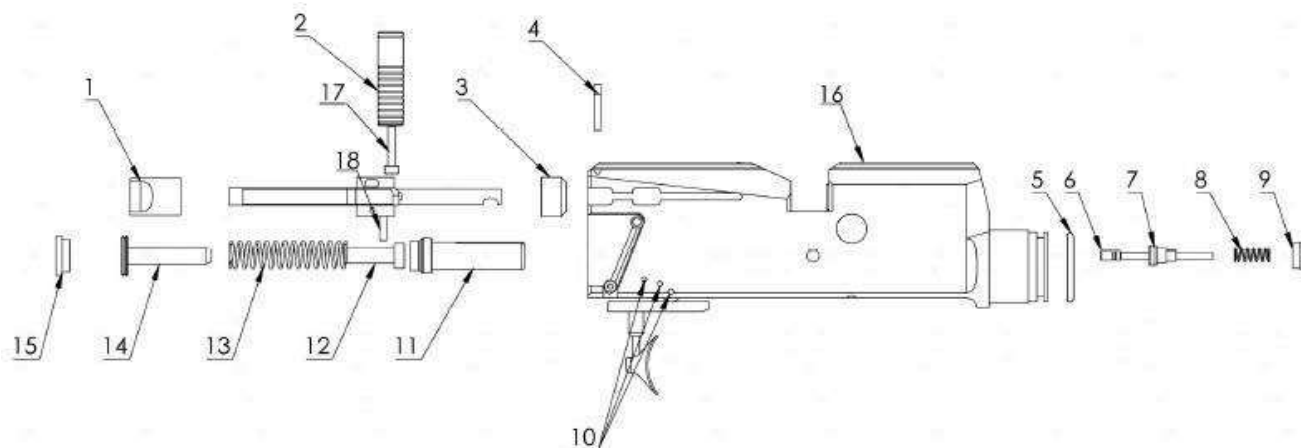


A

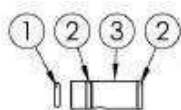


| Model | Other model names | Date | Revision | Revision date |
|---------------|-------------------|------------|----------|---------------|
| FX Streamline | | 2018-06-25 | EN.21.03 | 2021-05-12 |

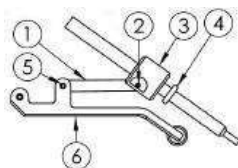
B



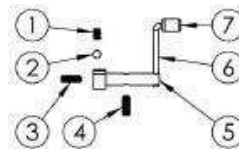
C



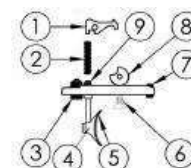
D



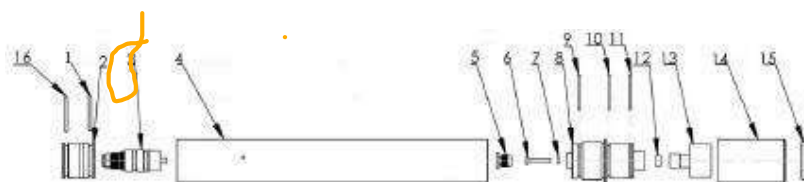
E



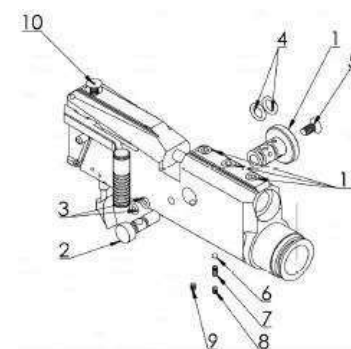
F



G



H





| Model | Other model names | Date | Revision | Revision date |
|---------------|-------------------|------------|----------|---------------|
| FX Streamline | | 2018-06-25 | EN.21.03 | 2021-05-12 |

| NO | ART. NO | DESCRIPTION | NO | ART. NO | DESCRIPTION | NO | ART. NO | DESCRIPTION |
|------------------|-----------|-------------------------------|-----------|---------|--|----------------|---------|--|
| A1 | 19802 | Shroud Guide | C1 - 4,5 | 2529 | O-ring 4,3x1,5 NBR 70 | G2 | 19512 | Regulator seat |
| A2 - 4,5 - 5,5 | 19868 | Shroud 20x470 | C1 - 5,5 | 19726 | O-ring 5,5x1,5 NBR 70 | G3 | - | See "Regulator pressure chart" schematic |
| A2 - 6,35 | 19867 | Shroud 20x585 | C1 - 6,35 | 4526 | O-ring 6,4x1,3 NBR 70 | G4 - 4,5 - 5,5 | 19830 | Tube 34x360 |
| A3 - 4,5 - 5,5 | 19807 | Compensator | C2 | 19703 | O-ring 10,0x2,0 NBR 70 | G4 - 6,35 | 19831 | Tube 34x475 |
| A3 - 6,35 | 19810 | Compensator .25 | C3 - 4,5 | 19817 | Barrel Inlet .177 | G5 | 19530 | Plug 1/8" Gold BC WC |
| A4 | 19821 | Muzzle-thread cover | C3 - 5,5 | 19815 | Barrel Inlet .22 | G6 | 19329 | Inlet-valve Rod (Gold) |
| A5 | 19744 | Barrel 4,50-14-485 Impact | C3 - 6,35 | 19822 | Barrel Inlet .25 | G7 | 5111 | O-ring 2,5x1,5 NBR 90 |
| A5 | 19706 | Barrel 5,50-14-485 Impact | D1 | 19021 | Side lever linkage | G8 | 20080 | Tube End Pressure Gauge |
| A5 | 19115 | Barrel 6,35-14-485 | D2 | 19042 | Cylindrical pin 2mx6x8 | G9 | 19485 | O-ring 23,0x2,5 NBR 70 |
| | | | D3 | 19011 | Pelletprobe 4,5 | G10 | 19484 | O-ring 24x2 NBR 70 |
| B1 | 19029 | Rear pellet probe guide | D3 | 19010 | Pelletprobe 5,5 V7 | G11 | 19484 | O-ring 24x2 NBR 70 |
| B2 | 19611 | Sideler handle | D3 | 19192 | Pelletprobe 6,35 V7.8 | G12 | 5003 | Plastic Washer 4mm 1/8" |
| B3 - 4,5 | 19823 | Probeguide .177 | D4 | 19171 | O-ring 4x2 NBR70 | G13 | 11505 | Pressure gauge 25mm 1/8" |
| B3 - 5,5 | 19820 | Probeguide .22 | D4 | 19332 | O-ring 5x2 NBR70 | G14 | 19544 | Dust cover Wildcat |
| B3 - 6,35 | 19819 | Probeguide .25 | D4 | 19228 | O-ring 6x2 NBR70 | G15 | 19545 | Dust cover plastic ring |
| B4 | 19034 | Screw M3 "special" | D5 | 19026 | Cylindrical pin 2,5m6x6 | G16 | 19497 | O-ring 23,3x2,4 NBR 70 |
| B5 | 19485 | O-ring 23x2,5 NBR 70 | D6 | 20398 | Sidelever Maverick, Wildcat MkIII, Crown, Streamline | H1 | 19804 | Outer power adjuster |
| B6 | 19816C | Valve pin Streamline Complete | E1 | 11503 | Spring 0,5x2,5x4,4 | H2 | 19805 | Inner power adjuster |
| B7 | 19060 | Valve seat SHP Complete | E2 | 4066 | Steelball 3mm | H3 | 19836 | O-ring 4,1x16 NBR70 |
| B8 - 24J> | 19850 | Spring 0,5x4x20 | E3 | 11633 | Grub Screw M2,5x8 | H4 | 19835 | O-ring 8x2 NBR70 |
| B8 - >16J | 19580 | Spring 0,75x4x20 | E4 | 11508 | Grub Screw M3x10 | H5 | 2505 | Countersink Screw M4x10 |
| B9 | 19803 | Valve mount | E5 | 11027 | Safety Pivot | H6 | 4066 | Steel Ball 3mm |
| B10 | 19040 | Cylindrical pin 2m6x23,5 | E6 | 19860 | Safety lever 32,5mm | H7 | 11501 | Spring 0,5x2,5x6,1 |
| B11 | 19039 | Hammer V7 | E7 | 11200 | Safety Handle | H8 | 2501 | Cup point grub screw M4x6 |
| B12 - 5,5 24J> | 19215 | Hammer Weight | F1 | 19177 | Trigger Sear v7.8.12 | H9 | 2637 | Grubscrew M4x6mm flat |
| B12 - 6,35 24J> | 19215 | Hammer Weight | F2 | 11504 | Spring 0,32x3,2x14,4 | H10 | 19025 | Countersunk screw M5x8 |
| B13 | 11500 | Hammer Spring | F3 | 11062 | Adj screw second stage, soft | H11 | 19846 | Grubscrew M6x6 |
| B14 - >16J + 4,5 | 11030 | Hammer Spring Adjuster | F4 | 12035 | Grub screw M2,5x2,5 | Stock 1 | 15008 | Triggerguard |
| B14 - 24J> | 11541 | Hammer Spring Adjuster | F5 | 19136 | Adjustable trigger blade | Stock 2 | 19845 | Countersunk screw M5x20, Front |
| B15 (uk) | 16043 | Anti-Tamper | F6 | 19214 | Countersunk screw m3x5 | Stock 3 | 11622 | Sheet metal screw 4,2x16, Rear |
| B16 - 4,5 | 19801-1R | Main Block Streamline .177 | F7 | 2500 | Grub Screw M3x6 | Stock | 19862C | Synthetic Stock Streamline |
| B16 - 5,5 | 19801-02R | Main Block Streamline .22 | F8 | 11525 | Trigger Wheel | Stock | 2510 | Socket head cap screw M5x30 |
| B16 - 6,35 | 19801-3R | Main Block Streamline .25 | F9 | 19809 | Trigger Pin | Stock | 16044 | Stock spacer |
| B17 | 19683 | Grubscrew M3x18 | F10 | 11524 | Trigger Base | Stock | 19863C | Stock streamline Walnut cpl. |
| B18 | 19490 | Cylindrical pin 3h6x14 | G1 | 19497 | O-ring 23,3x2,4 NBR 70 | Stock | 19864C | Stock Streamline Laminate Cpl. |
| | | | | | | Stock | 11523 | Countersunk screw M5x30 |